

Study of management on comorbid conditions in type-2 diabetes mellitus.

Arun Kumar S*, Subba Rao Ch, Priyanka D

Department of Pharmacy Practice, Vaageswari College of Pharmacy, Karimnagar, JNTUH, India

Abstract

Diabetes mellitus is a group of metabolic disorders characterized by hyperglycemia; is associated with abnormalities in carbohydrates, fat, and protein metabolism; and results in chronic complications including microvascular, macrovascular, and neuropathic disorders. The long term complications include retinopathy with potential blindness, nephropathy with kidney failure and neuropathy with risk of foot ulcers, amputation, and Charcot joint and sexual dysfunction. Macrovascular event is responsible for 75% of deaths in patients having type-2 DM. Multiple risk factors are responsible for developing type-2 DM, which include family history, obesity, habitual physical activity, race or ethnicity, previously identified impaired glucose tolerance or impaired fasting glucose, hypertension, high density lipoprotein cholesterol and triglyceride. This study is done to manage the comorbid conditions of diabetes mellitus. This study is a prospective observational study which was conducted over a period of 6 months among type-2 diabetic patients attending at an out-patient department of Care Diabetes Center, Hanamakonda, Warangal, Andhra Pradesh. This study took place between March and September 2013. Collected all relevant information from the patient's case sheets, laboratory reports, patients care taker, treatment charts and counseling. All the collected information documented properly by data collection form. Out of 554 patients was enrolled into the study. Among them 252 (45.48%) of these patients were men and 302 (54.52%) were females respectively. 58.48% (324) were associated with macrovascular complications and 33.39% (185) were associated with microvascular complications. This study was conducted to increase prevalence of disease, through creating awareness about drug treatment and diabetic complications. Among the various complications, macrovascular complications caused major threat and among macrovascular complications, Hyperlipidemia and hypertension are major causes. Prophylaxis was done for patient's in order to prevent the further complication of diabetes mellitus.

Keywords: Diabetes mellitus, Macrovascular complications, Microvascular complications.

Accepted on March 29, 2018

Introduction

According to WHO (World Health Organization) 2006, Diabetes mellitus is defined as metabolic disorder of multiple etiology characterized by chronic hyperglycemia with disturbances of carbohydrate, protein and fat metabolism resulting from defect in insulin secretion, insulin action or both.

Diabetes mellitus is a group of metabolic disorders characterized by hyperglycemia; is associated with abnormalities in carbohydrates, fat, and protein metabolism; and results in chronic complications including microvascular, macrovascular, and neuropathic disorders. The effects of diabetes mellitus include long-term damage, dysfunction and failure of various organs. This is also having characteristic symptoms like thirsty, polyuria, blurring of vision and weight loss. The long term complications include retinopathy with potential blindness, nephropathy with kidney failure and neuropathy with risk of foot ulcers, amputation, and Charcot joint and sexual dysfunction (American Diabetes Association [1]. Macrovascular event is responsible for 75% of deaths in patients having type-2 DM. Multiple risk factors are responsible for developing type-2 DM, which include family history, obesity, habitual physical activity, race or ethnicity, previously identified impaired glucose tolerance or impaired fasting glucose, hypertension, high

density lipoprotein cholesterol and triglyceride. Researchers have shown that as a result of these complications, the quality of life (QOL) of patients with type-2 DM is remarkably lower than the QOL of general population and also somewhat lower than patients with other chronic disease. Most complications are preventable and a key strategy is metabolic control through of diet, exercise, and medication (Ruth, *et al.*, 2008).

Nearly 10-15% of patients suffers from type-1 diabetes. It usually occurs in younger population, below 30 years of age. Occurring of type-1 diabetes is very high in girls between 10-12 years of age and boys between 12-14 years of age. Type-2 diabetes occurs mainly in older population >40 years of age. Most commonly occur in 55 years of age [2]. According to World Health Organization (WHO), there are 31.7 million people in India were affected by diabetes during the year 2000 which may further rise to 79.4 million by the year 2030. There are 171 million people in the world with diabetes in the year 2000 and it has estimated to increase 366 million by 2030 [3].

Aim and Objective of the Work

Aim

Main aim of this study is to treat co-morbid conditions which are associated with type-2 DM.

Objective

- To identify common complications in type-2 DM patients.
- To identify commonly used or prescribed medications to manage complications.
- To identify prophylaxis prescribed medications to prevent complications.

Methodology

This study is a prospective observational study which was conducted over a period of 6 months among type-2 diabetic patients attending at out-patient department of Care Diabetes Center, Hanamakonda, Warangal, Andhra Pradesh [4-6]. This study took place between March and September 2013. During the study period, the patients visiting out-patient department of care diabetes center were reviewed into the study by considering following inclusion and exclusion.

Inclusion criteria

- Type-2 Diabetic patients of both Genders.
- Patients of more than or equal to 20 years of age.
- Type-2 Diabetic patients having at least one diabetic complication.

Exclusion criteria

- Gestational Diabetes.
- Patients with Type-1 Diabetes.

Collected all relevant information from the patient's case sheets, laboratory reports, patients care taker, treatment charts and counseling. All the collected information documented properly by data collection form.

- Demographic details: Age, sex, education and address.
- Past medical history and present medical history.
- Habits: Type of diet, smoking, alcohol consumption
- Comorbid conditions
- Body mass index (BMI)
- Laboratory findings: Hemogram, serum biochemistry, blood pressure, lipid profile.
- Radiological findings: Vascular test, ECG, Foot examination, Fundus examination, CT, MRI, Micral test, Neuropathy.

BMI calculation is a standardized method to quantify the degree of obesity in an individual based on an individual's height and weight. It is also called Quetelet Index.

$$BMI = \frac{\text{Weight(kg)}}{\text{Height(m)}^2}$$

The patients are categorized into 3 categories based on their BMI score as:

- BMI ≤ 18.5 as underweight
- BMI ≥ 18.5, ≤ 25 as normal weight
- BMI ≥ 25 as overweight.

Statistical analysis

- Microsoft-Excel was used for standard deviation.

Results

During the study period (March-September 2013) total 2000 patients were reviewed. Among them, total number of 554 patients was enrolled into the study. Among them 252 (45.48%) of these patients were men and 302 (54.52%) were females respectively (Table 1).

Age wise distribution of patients

More number of patients were in the age group between 50-59 years (31.40%) followed by age group 40-49 years (29.06%). Both the age groups females are higher than males (Table 2).

Diabetic patients with comorbid conditions

Out of 554 patients nearly 58.48% (324) were associated with macrovascular complications like hypertension, Ischemic heart disease and Hyper lipidemia and 33.39% (185) were associated with microvascular complications like Neuropathy, Nephropathy and Retinopathy. Diabetic foot ulcers are not present. Remaining 8.13% (45) were associated with other complications like Asthama, Hypothyroidism etc. Among them macrovascular complications are most predominant (Table 3 and Figure 1).

Details of macrovascular diabetic complications

Macrovascular complications which are associated with diabetes are Hypertension (57.22%), Ischemic heart disease (21.66%), Hyperlipidemia (47.65%). Hypertension is the highest percent among the macrovascular complications (Table 4).

Table 1: Gender wise distribution of patients.

Gender distribution	Number of patients	Percentage (%)
Males	252	45.48
Females	302	54.52
Total (n)	554	100

n=Total number of patients

Table 2: Age wise distribution of patients.

Age group (years)	Total no of patients	Males	Females	Total no of patients (%)	Males (%)	Females (%)
20-29	12	7	5	2.16	1.26	0.90
30-39	57	29	28	10.28	5.23	5.05
40-49	161	62	99	29.06	11.19	17.87
50-59	174	67	107	31.40	12.09	19.31
60-69	127	63	64	22.92	11.37	11.55
>70	23	13	10	4.15	2.34	1.81

Age wise distribution of patients and their percentage females are more than male, more number of patients were in the age group 50-59 years.

Table 3:-Diabetic patients with co-morbid conditions.

Co-morbid conditions	No of patients	Percentage (%)
Macrovascular complications	324	58.48
Microvascular complications	185	33.39
Other complications	45	8.12

Macrovascular complications with microvascular complications are more when compared.

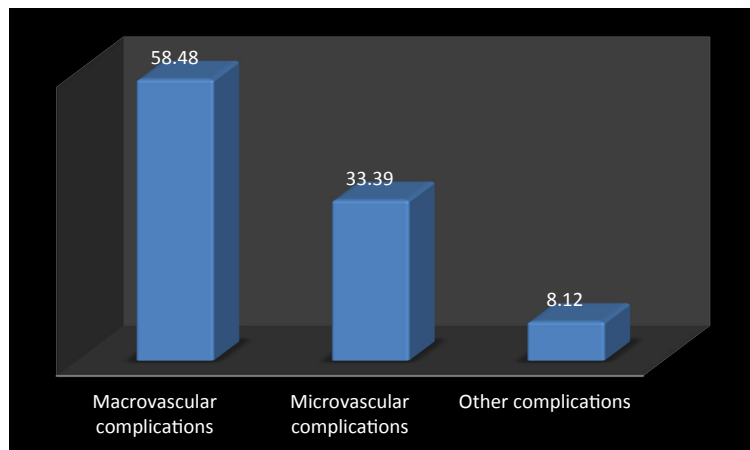


Figure 1. Percentage of diabetic patients with co-morbid conditions. Macrovascular complications with microvascular complications are more when compared.

Drug therapy of DM patients with HTN

Most commonly prescribed combination therapy of drugs for treating hypertension were Olmesartan and hydrochlorothiazide (46.68%) followed by telmisartan and hydrochlorothiazide (5.67%) which are angiotensin receptor blockers and thiazides diuretics [7-12]. Monotherapy of drugs are telmisartan (17.66%) followed by losartan (17.35%) angiotensin receptor blockers are prescribed more. Metoprolol (9.46%) beta-blocker, Amlodipine (1.57%) calcium channel blocker, Ramipril (0.94%) and Enalapril (0.63%) which are angiotensinogen converting enzyme are prescribed [13,14]. The treatment have analysed that the class of angiotensin receptor blocker along with thiazides diuretic are prescribed most commonly (Figure 2 and Table 5).

Drug therapy of DM patients with IHD

Most commonly prescribed drugs are in the class of anti-platelets are Aspirin (35.83%) were given to the patients with ischemic heart disease followed by clopidogrel (32.5%). A combination of aspirin and clopidogrel (2.5%) were given to coronary heart disease patients, which shows synergistic effect. A combination of aspirin and Atorvastatin (29.16%) were prescribed to elevated LDL cholesterol patients (Figure 3 and Table 6).

Drug therapy of DM patients with hyperlipidemia

Patients with elevated total cholesterol or LDL cholesterol were given Atorvastatin (72.72%). Fenofibrates were given to patients with elevated triglycerides [15-18]. Rosuvastatin (21.21%) were given to reduce HDL. Combination therapy was given more rarely. Atorvastatin and fenofibrate (0.37%) given to the patients with both elevated triglycerides and LDL cholesterol. Rosuvastatin and fenofibrate (5.68%) were given to the patients with both elevated triglyceride and reduce HDL (Figure 4 and Table 7).

Details of microvascular diabetic complications

Micro vascular complications occur due to the damage of small blood vessels. Damage of nerves from diabetes is known as diabetic neuropathy (67.76%). Nephropathy, where kidney enlarges in size, which follows the increase in glomerular filtration rate (GFR), but as the disease advances it decreases (2.88%). Diabetic Retinopathy affects the eyes, risk of

Table 4: Details of different macrovascular diabetic complications.

Macrovascular complications	Percentage (%)
Hypertension	57.22
Ischemic heart disease	21.66
Hyperlipidemia	47.65

Diabetic macrovascular complications and their percentage.

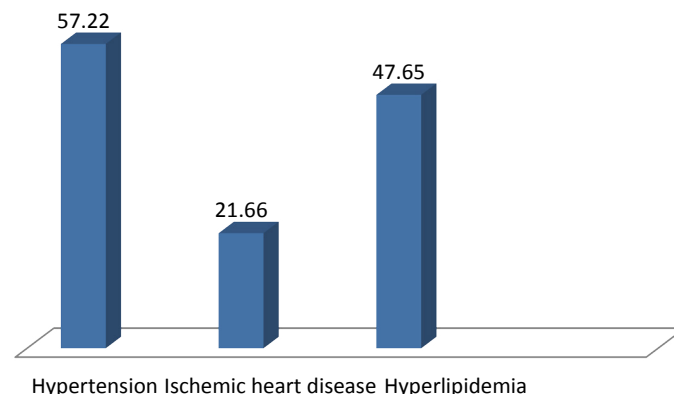


Figure 2. Percentage of different macrovascular diabetic complications. Hypertension is more occurring complication with diabetes mellitus followed by hyperlipidemia.

Table 5: Details of different drugs used in therapy of DM patients with HTN (n=317).

Drugs used in therapy of HTN	Percentage (%)
Losartan	17.35%
Telmisartan	17.66%
Metoprolol	9.46%
Olmesartan+hydrochlorothiazide	46.68%
Telmisartan+hydrochlorothiazide	5.67%
Amlodipine	1.57%
Enalapril	0.63%
Ramipril	0.94%

n=total no of patients. Class of drugs, Angiotensin receptor blockers and thiazides diuretics are prescribed more (Olmesartan+hydrochlorothiazide).

developing diabetic retinopathy (4.51%) or other microvascular complications of diabetes depends on both the duration and the severity of hyperglycemia (Figure 5 and Table 8).

Drug therapy of DM patients with nephropathy

Nephropathy associated with Diabetes mellitus [19,20].

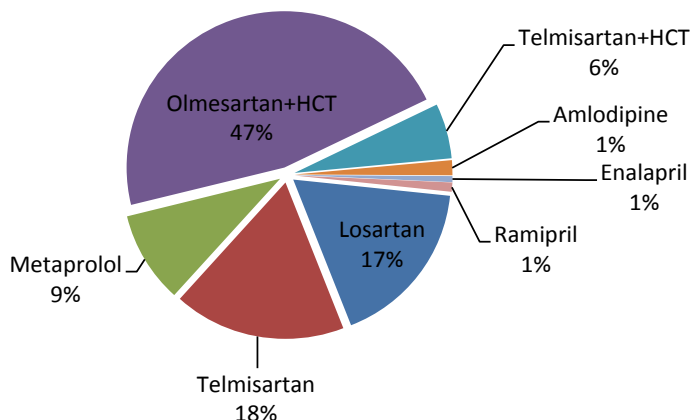


Figure 3. Percentage of different drugs used in therapy of DM patients with HTN. Olmesartan+HCT (hydrochlorthiazide) drugs are prescribed more followed by losartan.

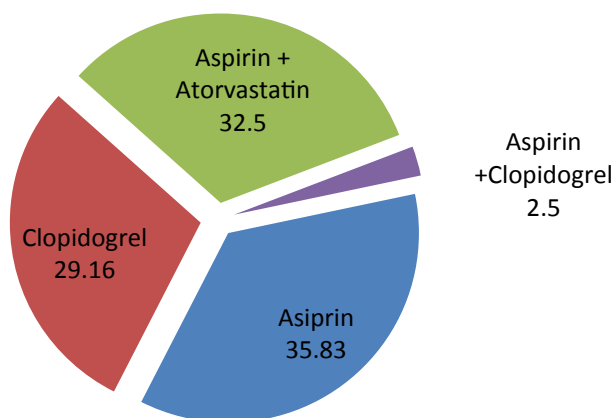


Figure 4. Percentage of different drugs used in therapy of DM patients with IHD percentage of anti-platelets drugs prescribed. Aspirin were prescribed more when compared with other drug.

Table 6: Details of different drugs used in therapy of DM patients with IHD (n=120).

Drugs used in therapy of IHD	Percentage (%)
Aspirin	35.83%
Clopidogrel	32.5%
Aspirin+Atorvastatin	29.16%
Aspirin+Clopidogrel	2.5%

n=total no of patients. IHD drugs associated with diabetes. Class of anti-platelets drugs.

Table 7: Details of drugs used in therapy of DM patients with Hyperlipidemia (n=264).

Drugs used in therapy of Hyperlipidemia	Percentage (%)
Atorvastatin	72.72%
Rosuvastatin	21.21%
Atorvastatin+Fenofibrate	0.37%
Rosuvastatin+Fenofibrate	5.68%

n=total no of patients. Hyperlipidemia drugs, Statins (HMG CoA reductase inhibitors).

Where kidney enlarges in size, which follows the increase in glomerular filtration rate (GFR), but as the disease advances it decreases. Class of drugs such as angiotensin converting enzyme inhibitors, angiotensin receptor blockers and diuretics were given in diabetic nephropathy. Losartan (56.25%) were given mostly followed by torsemide (25.00%) and Ramipril (18.75%) (Figure 6 and Table 9).

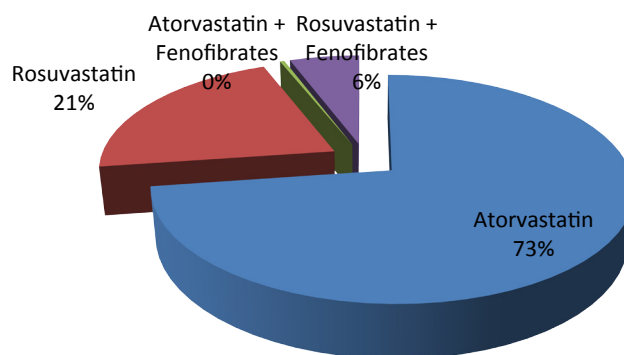


Figure 5. Percentage of different drugs used in therapy of DM patients with hyperlipidemia. Percentage of statins prescribed to reduce cholesterol. Atorvastatin preferred more.

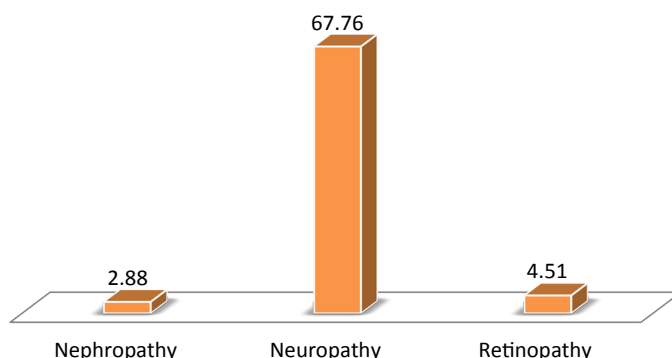


Figure 6. Details of different microvascular diabetic complications. Among microvascular complications, Neuropathy is most leading complication.

Table 8:-Details of different microvascular Diabetic Complications.

Microvascular complications	Percentage (%)
Nephropathy	2.88
Neuropathy	67.76
Retinopathy	4.51

Diabetic microvascular complications and their percentage.

Table 9: Details of different drugs used in therapy of DM patients with Nephropathy. (n=16).

Nephropathy	Percentage (%)
Ramipril	18.75
Losartan	56.25
Torsemide	25.00

Drug therapy of DM patients with neuropathy

Damage of nerves from diabetes is known as diabetic neuropathy. In diabetic neuropathy NSAIDS were prescribed more acetaminophen (45.06%) followed by anti-convulsants, pregabalin (25.6%), Clonazepam (11.46%) which is a sedative, beta-histine (6.4%) an anti-vertigo drug, Famotidine (3.73%) H₂-receptor antagonist, Amitriptyline (3.2%) anti-depressant, Acyclopram+Clonazepam (2.93%), Duloxetine (1.6%) (Figure 7).

Anti-depressants and anti-convulsants are given as first line therapy in diabetic neuropathy.

Details of drugs used for prophylaxis of HTN and hyperlipidemia

Prophylaxis is a prevention of disease and possible health issues.

In macrovascular complications, HTN drugs are prescribed more commonly [21-23]. Olmesartan 10 mg (38.96%), Losartan (33.76%), Telmisartan 10 mg and 20 mg (7.79%), Metoprolol succinate 12.5 mg (7.79%), Telmisartan+Amlodipine (20+2.5 mg), Enalapril 5 mg (1.29%), Cilindipine 5 mg (1.29%).

Class of drugs: angiotensin receptor blockers are prescribed more followed by beta-blockers.

Hyperlipidemia drugs are prescribed more common after HTN drugs. Atorvastatin 10 mg (83.92%) were given for maximum members, Rosuvastatin 10 mg (14.28%), Colestipol 5 mg (1.78%) (Figures 8-10 and Tables 10-12).

Discussion

In this study, Diabetes Mellitus associated comorbid conditions were analyzed and managed by the treatment. Type-2 DM is a complex, heterogeneous, polygenic metabolic syndrome where the body fails to produce enough insulin which is required for our body, characterized by abnormal homeostasis [24-26]. The burden of DM is sever with macrovascular complications like HTN, peripheral vascular disease, atherosclerosis and microvascular complications like nephropathy, neuropathy, retinopathy of the disease. Result of ageing, increasing obesity and decreasing physical activity, the global incidence of prevalence of DM exploding.

In this study, total number of 554 Type-2 Diabetes Mellitus patients prescriptions was included, were females (54.52%) are

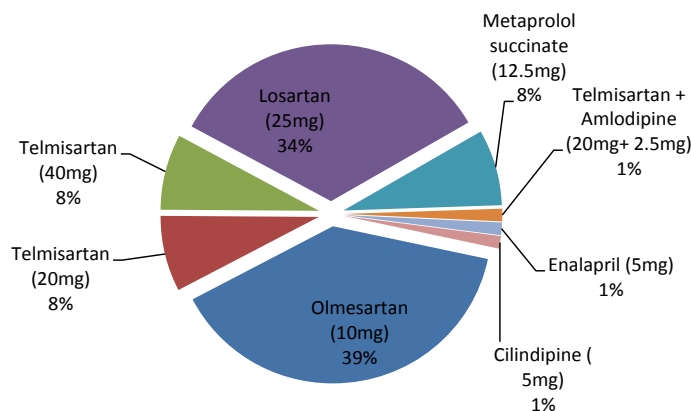


Figure 9. Percentage of drugs used in prophylaxis of HTN.

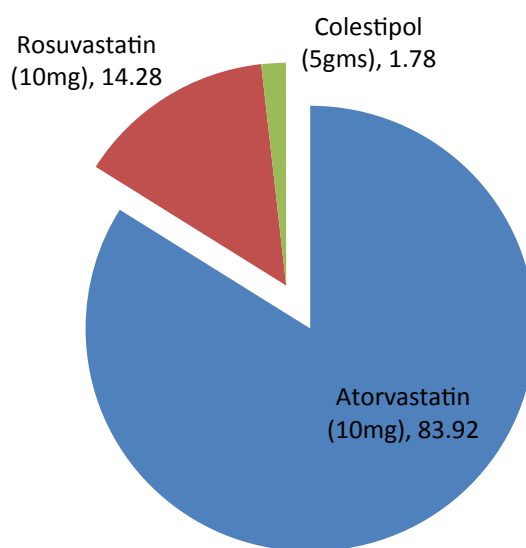


Figure 10. Percentage of drugs used in prophylaxis of hyperlipidaemia.

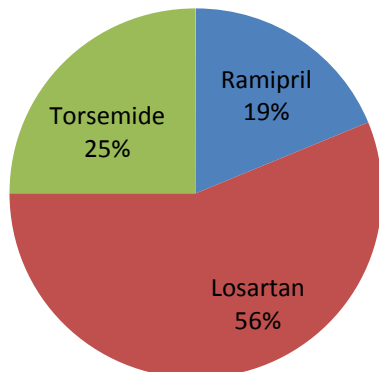


Figure 7. Percentage of different drugs used in therapy of nephropathy. Percentage of drugs used to reduce complications of nephropathy. Losartan prescribed more.

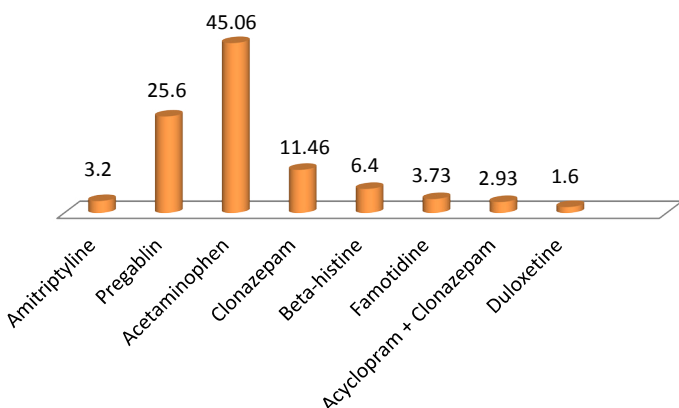


Figure 8. Percentage of different drugs used in therapy of Neuropathy. Percentage of drugs used to reduce neuropathic complications.

higher than males (45.48%) same as percentage of females were more than men when compared with the previous study [27,28]. It was observed that maximum number of patients (31.40%) were between age group of 50-59 years same as compared with previous study [3]. In generally elder patients are at a greater risk of developing Type-2 Diabetes Mellitus.

Diabetes complications are major life threatening, which leads to morbidity and mortality. Patients with long duration of Diabetes are at high risk of developing complications [29,30]. Various Macrovascular complications including Hypertension, Hyperlipidemia, and Ischemic heart disease, cardiovascular complications cause major threat. In this study there were total number of 554 patients prescriptions were enrolled. Macrovascular complications are found to be in more percentage (58.48%) when compared to Microvascular complications. Among Macrovascular complications, Hypertension was accounted for 57.22% of the total complications in diabetes patients, highest percentage of complications followed by Hyperlipidemia. Same results were obtained by previous studies [4,5].

ARB's and thiazides diuretics are given in combination for treating HTN (46.68%) followed by ARB's (17.66%). Patients with elevated total cholesterol or LDL cholesterol were given Atorvastatin. Fenofibrates were given to patients with elevated

Table 10: Details drugs of different used in therapy of DM patients with Neuropathy (n=375).

Neuropathy	Percentage (%)
Amitriptyline	3.2
Pregabalin	25.6
Acetaminophen	45.06
Clonazepam	11.46
β-histine	6.4
Famotidine	3.73
Acyclopram+Clonazepam	2.93
Duloxetine HCL	1.6

n=no of patients. Neuropathic drugs, mostly prescribed drugs are NSAIDS followed by anti-convulsants.

Table 11: Drugs used for prophylaxis of HTN.

Hypertension	No. of patients	Percentage (%)
Olmesartan (10 mg)	30	38.96
Telmisartan (20 mg)	6	7.79
Telmisartan (40 mg)	6	7.79
Losartan (25 mg)	26	33.76
Metoprolol succinate (12.5 mg)	6	7.79
Telmisartan+Amlodipine (20 mg+2.5 mg)	1	1.29
Enalapril (5 mg)	1	1.29
Cilindipine (5 mg)	1	1.29

Table 12: Drugs used for prophylaxis of Hyperlipidemia.

Hyperlipidemia	Total number of patients	Percentage (%)
Atorvastatin (10 mg)	47	83.92
Rosuvastatin (10 mg)	8	14.28
Colestipol (5 gms)	1	1.78

triglycerides. Rosuvastatin were given to reduce HDL. Statins (72.72%), HMG CoA reductase inhibitors many acts on abnormal lipid levels and atherosclerotic plaque stabilizing effect. Aspirin (35.83%), an anti platelet drug used to treat patients with co-existing IHD. Clopidogrel was given to patients with acid peptic disease. Combination therapy of aspirin and clopidogrel given to patients with coronary artery disease. Ramipril, Aspirin and Atorvastatin were given to patients with associated HTN, IHD and Hyperlipidemia.

Microvascular complications which include neuropathy, nephropathy and retinopathy. Out of 554 patients prescriptions, Microvascular complications were found to be 185 patients the percentage of patients who are diagnosed with diabetic nephropathy are 2.88%, diabetic neuropathy are 67.76%, diabetic retinopathy are found to be 4.51%. Among these complications diabetic neuropathy was higher when compared to diabetic nephropathy and diabetic retinopathy. Hence diabetic neuropathy is more common in Warangal and karimnagar regions. When compared with study diabetic nephropathy is more may be due to life style, food habits etc.

In treatment of diabetic neuropathy NSAID's were prescribed common (45.06%); Acetaminophen. Followed by Anti convulsants (25.6%); pregabalin and sedative (11.46%); Clonazepam. In treatment of diabetic nephropathy ARB's are most commonly prescribed drugs (56.25%), followed by diuretics (25.00%).

Prophylaxes of Diabetes Mellitus patients with HTN were treated, according to JNC 7th Guidelines if BP is ≤ 130/80. ARB's

are given for HTN (38.96%); Olmesartan 10 mg followed by losartan 10 mg (33.78%). For Hyperlipidemia, Atorvastatin 10 mg (83.92%) followed by (14.28%).

Conclusion

In this study, Diabetes Mellitus associated comorbid conditions were analyzed and managed by the treatment. This study shows the drug utilization pattern of co-morbidities among type-2 diabetic patients which were conducted in out-patient department. In this study females were more affected than males. It was observed that maximum number of patients (31.40%) was between age group of 50-59 years.

This study was conducted to increase prevalence of disease, through creating awareness about drug treatment and diabetic complications. Among the various complications, macrovascular complications caused major threat and among macrovascular complications, Hyperlipidemia and hypertension are major causes. Prophylaxis was done for patients in order to prevent the complication of diabetes mellitus.

References

1. American Diabetes Association. Standards of medical care in diabetes. Diabetes Care. 2013;36(1):1-66.
2. Wild S, Roglic G, Green A, et al. Global Prevalence of Diabetes: Estimation for the year 2000 and projections for 2030. Diabetes Care. 2004;27:1047-53.
3. Akila L, Sandozi T, Geetha Devi, et al. Drug utilization study on oral anti-diabetic drugs at a tertiary care (SRM Medical college) hospital in Chennai, Int J Med Research. 2011;1(3):177-82.
4. Upadhyay DK, palaian S, Shankar RP, et al. Prescribing pattern in diabetic out patients in a tertiary care teaching hospital in Nepal. Journal of Clinical and Diagnostic Research. 2007;3;248-55.
5. Arshad K, Kumar SA. Study on Drug Utilization of Oral Hypoglycemic Agents in Type-2 DM Patients. Asian J Pharm Clin Res. 2011;4(4):60-4.
6. Howlett JG, Macfadyen JC. Treatment of Diabetes in people with Heart Failure. Canadian Diabetes Association Clinical Practice Guideline Expert Committee. Can J Diabetes. 2013;37:126-8.
7. Kamrai D, Sachdeva P. Prescribing Trends of Antidiabetics in Diabetic Patients and Hypertensive Diabetic Patients in an Urban Secondary Care Hospital. IJPBA. 2010;1(3):249-55.
8. Lindsay TJ, Vitrikas K., Temporal-M, et al. Herndon CM. Diabetic Neuropathic Pain: Real World Treatment Options. Clinical Medicine Insights: Therapeutics. 2012;4:169-83.
9. Morerai RO, Papelbaum M, Fontenelle LF, et al. Comorbidity of psychiatric disorders and symmetric distal polyneuropathy among Type-2 Diabetic Outpatients. Braz J Med Biol Res. 2007;40(2):269-75.
10. Motataianu A, Stoian A, Bajko Z. Diabetic Cardiovascular Autonomic Neuropathy Clinical impact-Acta. Medica Transilvanica March. 2013;2(1):315-18.

11. Nwabudike LC, Tirgoviste CI. Risk Factors and Clinical characteristics for foot ulcers in Patients with Diabetes in Bucharest. Romania. Proc Rom Acad. 2008;1(2):49-52.
12. NICE Clinical guideline 87 - type 2 diabetes.
13. Patel B, Oza B, Patel KP, et al. Pattern of anti-diabetic drugs use in type2 diabetic patients in a medicine outpatient clinic of tertiary care teaching hospital, Int J Basic Clin Pharmacol Aug. 2013;(40):485-91.
14. Rema M, Pradeepa R, diabetic retinopathy :An Indian perspective Indian J Med Res March. 2007;125:297-10.
15. Rohilla A, Kumar R, Rohilla S, et al. Diabetic Retinopathy: origin and complications. Euro J Exp Bio. 2012:310.
16. Ruthu K, Anneli R, Margous L. Predictors of quality of life of patients with type2 diabetes. Patients Preferences and Adherence. 2008;2:21-6.
17. Subbasish S, koushik DK, Sabita S, et al. Prescription analysis in diabetes mellitus. Int J Pharm Bio Sci. 2010;1(1):1-8.
18. Sumanth Bala, Soundarssanane M, Gautham R, et al. Risk factors of Diabetes mellitus in Rural puducherry. Online Journal of Health and Allied Sciences. 2012;11(1).
19. Standards of Medical Care and Diabetes Care. 2010;33:11-61.
20. Boccuzzi SJ. Utilization of oral hypoglycemic agents in a drug insured U.S population. Diabetes Care. 2001;24(8):1411-15.
21. Lindsay TJ, Vitrikas K, Temporal M, et al. Diabetic neuropathic pain: real world treatment options. Clinical; Medicine Insights: Therapeutics. 2012;4:169-83.
22. Katon WJ. The association of comorbid depression with mortality in patients with type-2 diabetes. Diabetes Care. 2005;28:2668-72.
23. Winaver J, Teredesai P, Feldman HA. Diabetic nephropathy as the mode of presentation of diabetes mellitus. Metab Clin Exp. 1979;28:1023-30.
24. Abate N, Chandalia M. Ethnicity and type-2 diabetes focus on Asian Indians. Journal of Diabetes and its Complications. 2001;15:320-27.
25. Ali N. Analysis of drug used for the treatment of complications of diabetes in a teaching hospital der. Pharmacia Letter. 2011;3(4):163-77.
26. American Diabetes Association. Treatment of hypertension in adults with diabetes. Diabetes Care. 2002;25:71-73.
27. American Diabetes Association. Economic cost of diabetes in the US in 2002. Diabetic Care. 2003;26:917-32.
28. American Diabetes association. Standards of medical care in diabetes. Diabetes Care. 2007;30(1):4-41.
29. Boulton AJM. Management of diabetic peripheral neuropathy. Clinical Diabetes. 2005;23(1):9-15.
30. Boulton AJM, et al. Neuropathic diabetic foot ulcers. N Engl J Med. 2004;351:48-55.

***Correspondence to:**

Arun KS
 Department of Pharmacy Practice
 Vaageswari College of Pharmacy
 India
 Tel: 095025 88612
 E-mail: chamakurii.subbu@gmail.com