

Prognostic role of thymidylate synthase expression in gastric cancer: A meta-analysis

Nan Li, Xueming Wang, Junshan Zhai, Yuling Shi, Yanmei Wang, Jianhua Zhu, Lina Sha, lei Zhang, Lijun Jiang, Yuefan Zhang

The Department of Gastrology and Minimally Invasive Intervention Center for Digestion, The 309 Hospital of Chinese PLA , Beijing, 100091, China

Abstract

Background: thymidine phosphorylase (TP) has been identified as a specific marker enzyme that is expressed in tumor-infiltrating macrophages, being associated with tumor angiogenesis and poor prognosis in patients with intestinal-type gastric cancer. However, the clinical and prognostic significance of TP expression in gastric cancer remains controversial. Publications were identified which assessed the clinical or prognostic significance of TP expression in gastric cancer from January 1995 to May 2013. A meta-analysis was performed to clarify the association between TP expression and clinical outcomes. A total of 13 studies met the inclusion criteria, and comprised 1541 cases. Analysis of these data showed that there was no statistically significant association of TP and tumor differentiation (pooled OR = 0.88, 95% CI: 0.67–1.15, Z = 0.94, P = 0.95, fixed-effect). There was significant association between the expression of TP and clinical parameters such as lymph node metastasis (pooled OR = 2.35, 95% CI: 1.42–3.88, Z = 3.34, P = 0.0009 random-effect) or lymphatic invasion (pooled OR = 1.71, 95% CI: 1.02–2.87, Z = 2.02, P = 0.04 random-effect). Moreover, in identified studies, the expression of TP was correlated with reduced overall survival (relative risk [RR] = 1.73, 95% CI: 1.06–2.82, Z = 2.19, P = 0.03). TP expression is associated with tumor aggressiveness and poor prognosis. If this finding is confirmed by well-designed prospective studies, TP expression may be a useful prognostic indicator for clinical outcome in patients with gastric cancer.

Keywords: Thymidine phosphorylase, Tumor angiogenesis, Gastric cancer, Prognosis

Accepted November 13 2-13

Introduction

Gastric cancer is one of the leading causes of cancer-related deaths worldwide, especially in Far East Asia, in countries such as Japan, China, and Korea [1]. Increasing evidence suggests that solid tumors, including gastric cancer, require neovascularization for growth and metastasis. It is also thought that the degree of tumor angiogenesis is related to clinical outcome, suggesting that angiogenic properties are correlated with tumor aggressiveness [2, 3]. Recent studies have shown that macrophages, as well as malignant cells, are an important source of such angiogenic factors in solid tumors [4]. Kawahara et al reported that TP could be a specific marker enzyme that is expressed in tumor-infiltrating macrophages, being associated with tumor angiogenesis and poor prognosis in patients with intestinal-type gastric cancer [5].

TP, an enzyme originally isolated from platelets and also known as platelet-derived endothelial cell growth factor (PDEC GF), catalyses the reversible phosphorolysis of thymidine to deoxyribose 1-phosphate and thymine. It has been proposed that one role for TP is to control the intracellular levels of thymidine, which at high concentrations becomes toxic to cells and causes replication errors in DNA [6]. Direct evidence of a role for TP in angiogenesis comes from experiments in which xenografts from transformed fibroblasts transfected with TP form more highly vascularized tumors than controls [8]. In addition, xenografts of the breast carcinoma line MCF-7, when transfected with TP, form more rapidly growing tumors than controls [8]. Increased expression of TP has been reported in a number of tumor types. TP expression was 260-fold higher in invasive cancers than in normal bladder samples and 40-fold higher in invasive cancers than superficial cancers [9, 10].

Expression of TP was significantly associated with microvessel density and poor clinicopathologic parameters in gastric cancer and in other various tumor sites [11]. However, Koriyama et al. showed that the expression of TP varied according to the histological type of gastric cancer [12]. There is insufficient clinical data to confirm a clinical application for TP. In order to address controversial issues, we performed a meta-analysis to determine the association between the expression of TP and clinicopathologic parameters in gastric cancer.

Materials and Methods

Publication search

A comprehensive computer literature search of abstracts about studies in human subjects was performed to identify articles about the prognostic role of TP expression in gastric cancer. The MEDLINE and EMBASE databases, from January 1995 to May 2013, were used with the following key words: “thymidine phosphorylase” or “TP” or “platelet-derived endothelial cell growth factor” or “PDECGF” or “gastric carcinoma” or “gastric cancer”, and “overall survival” or “OS”. All searched studies were retrieved, and their bibliographies were checked for other relevant studies identified were hand-searched to find additional eligible studies.

Information was carefully extracted from all eligible publications independently by two of the authors according to the inclusion criteria. Disagreements were resolved in consensus. The inclusion criteria were: (1) articles dealing with the expression of TP and either prognostic factors or overall survival (OS) of gastric cancer; (2) articles containing sufficient data to allow the estimation of an odds ratio (OR) or a relative risk (RR) of OS; (3) articles were reported in the English or Chinese (4) articles published as original research. Reviews, comments, duplicated studies, and articles unrelated to our analysis were excluded. Studies with fewer than 50 patients, follow-up less than 2 years, and relevant articles using RT-PCR or ELISA were also excluded.

The following information was extracted from the included papers: author, publication year, patient's country, tumor stage, number of patients, research technique used and definition of TP positivity. Two major groups were created according to the objective. One clarified the association between the expression of TP and clinicopathological parameters, including degree of differentiation, lymph node status and lymphatic invasion. Another group investigated the association between the expression of TP and OS.

Statistical analysis

The meta-analysis was performed as previously described [13]. For ease of analysis, the following data of the expression of TP and clinicopathological factors were com-

bined into single categories: TP-negative and positive; and well and moderate differentiation. ORs with 95% CI were used to evaluate the association between the expression of TP and clinicopathological factors, including tumor differentiation, lymph node status and lymphatic invasion. Survival data were extracted from original papers as described by Parmar et al. [14]. Differences between the expression of TP and OS were quantified using RR with 95% CI. Heterogeneity across studies was evaluated with the Q test and P values. ORs and RRs were calculated by a random-effects model when the P value was less than 0.05. Otherwise, a fixed-effects model was used. The Begg and Egger funnel plot was used to assess publication bias. Statistical analyses were estimated using Review manager software. P values were two-sided, with significance at $P < 0.05$.

Results

Description of studies

A total of 13 publications met the criteria for this analysis [12, 15-26]. The total number of patients was 1541, ranging from 67 to 183 patients per study. Main characteristics of the eligible studies were summarized in Table 1. Thirteen articles dealt with clinicopathological factors. Six studies determined with OS. There was only one kind of methods used to evaluate the expression of TP in gastric cancer specimens: immunohistochemistry (IHC)

Correlation of TP expression with clinicopathological parameters

Nine studies investigated the relationship between the expression of TP and degree of tumor differentiation (Figure 1). There was no statistically significant association of TP and tumor differentiation (pooled OR = 0.88, 95% CI: 0.67–1.15, $Z = 0.94$, $P = 0.95$, fixed-effect). There was significant association between the expression of TP and clinical parameters such as lymph node metastasis (pooled OR = 2.35, 95% CI: 1.42–3.88, $Z = 3.34$, $P = 0.0009$ random-effect) (Figure 2) or lymphatic invasion (pooled OR = 1.71, 95% CI: 1.02–2.87, $Z = 2.02$, $P = 0.04$ random-effect) (Figure 3).

Impact of TP expression on overall survival of gastric cancer patients

The meta-analysis was performed on six studies (868 patients) investigating the association of TP expression and OS. The pooled RR was calculated using the methods described above. As the test for heterogeneity was significant ($P < 0.0001$), a random-effect model was used to calculate the RR. The presence of TP expression was highly correlated with poor OS (pooled RR = 1.73, 95% CI: 1.06–2.82, $Z = 2.19$, $P = 0.03$) (Figure 4). This indicated that TP was an independent prognostic factor in gastric cancer. No significant publication bias was detected.

Table 1. Main characteristics of the eligible studies

Study	Patient's country	Year	Tumor stage (UICC)	Technique	Number of patients	Definition of TP positivity
Takebayashi	Japan	1996	I-IV	IHC	158	> 5%
Tanigawa	Japan	1996	I-IV	IHC	154	cytoplasm positive
Maeda	Japan	1996	I-IV	IHC	120	cytoplasm positive
Saito	Japan	1999	II-IV	IHC	126	> 5%
Suda	Japan	1999	IIIB	IHC	67	cytoplasm positive
Kimura	Japan	2001	II	IHC	102	> 5%
Konno	Japan	2002	I-III	IHC	116	> 5%
Yu	China	2004	I-IV	IHC	120	>Score 3
Fan	China	2005	I-IV	IHC	69	> 5%
Li	China	2006	I-III	IHC	90	≧ Score 4
Koriyama	Japan	2010	I-IV	IHC	156	> 5%
Zhang	China	2011	0-IV	IHC	183	≧ Score 2
Yang	China	2012	I-IV	IHC	80	>Score 2

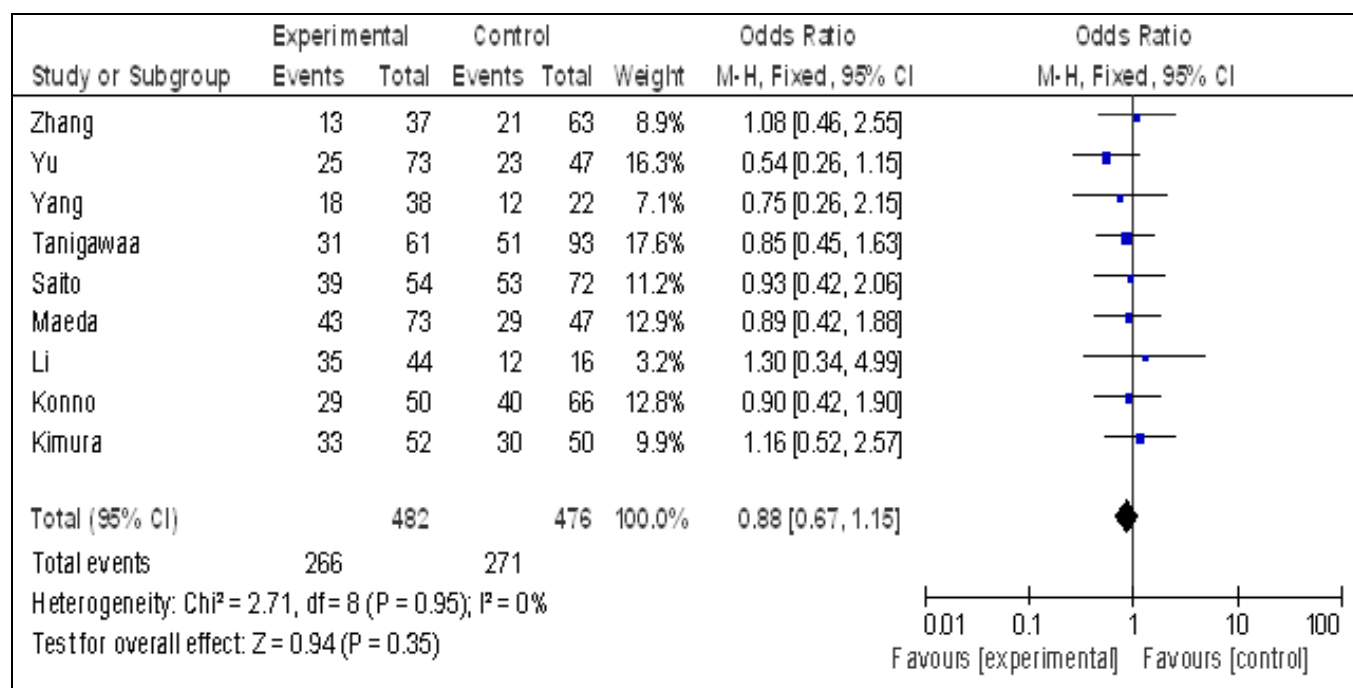


Figure 1. Forrest plot of ORs for the association of TP expression with tumor differentiation

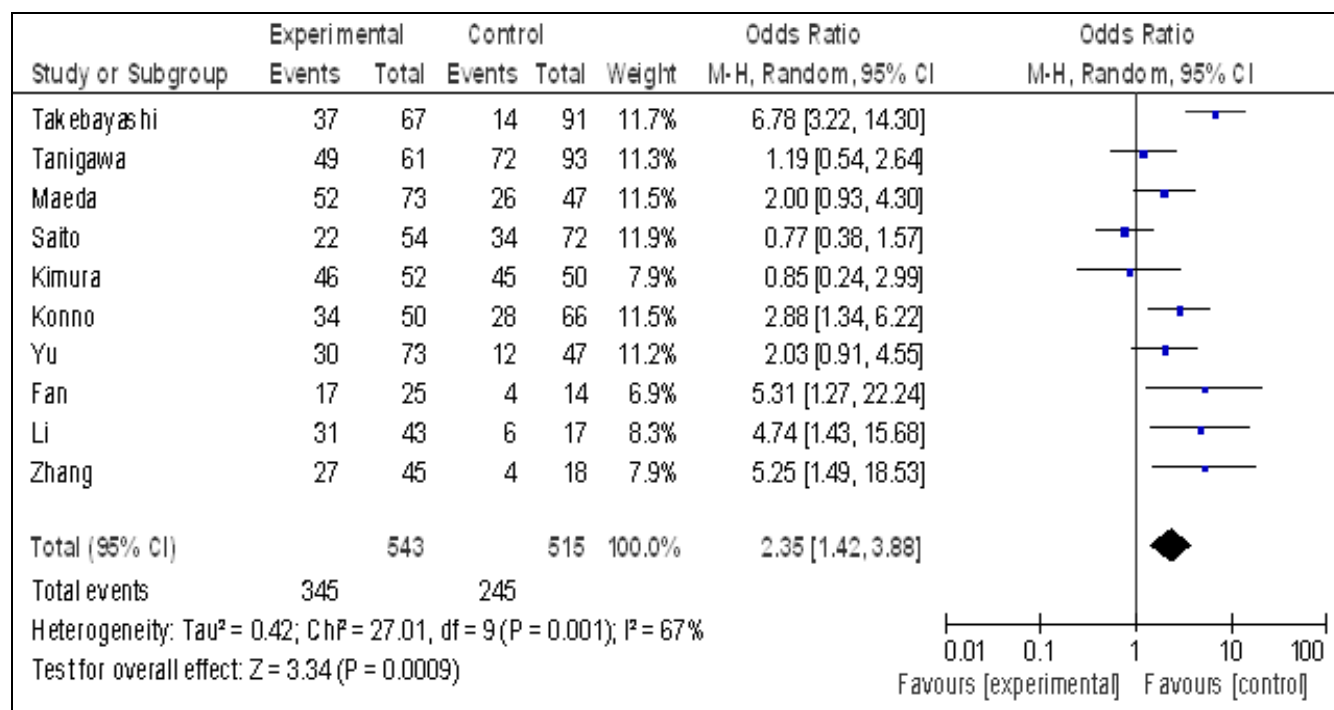


Figure 2. Forrest plot of ORs for the association of TP expression with lymph node metastasis.

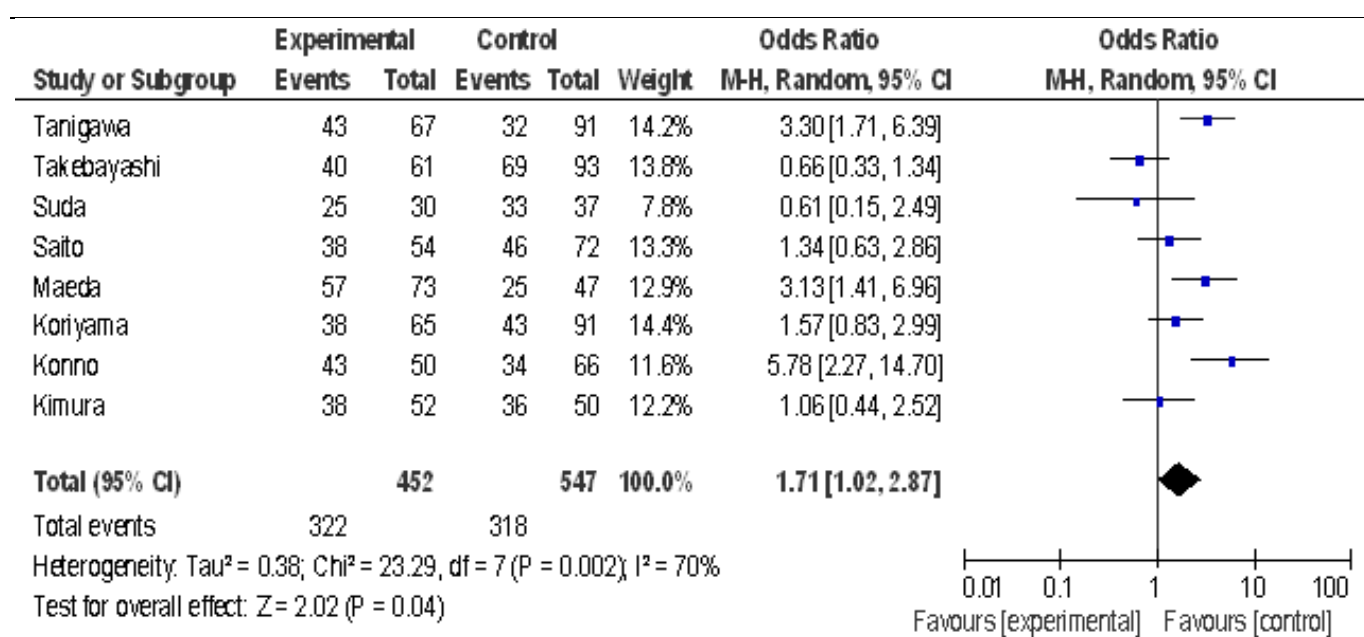


Figure 3. Forrest plot of ORs for the association of TP expression with lymphatic invasion.

Publication bias

Begg's funnel and Egger's test were performed to assess the publication bias in this meta-analysis. Funnel plots' shape did not reveal obvious evidence of asymmetry

(Figure 5). Egger's test showed no significant publication bias for degree of differentiation ($P=0.532$), lymph node metastasis ($P=0.368$) and OS ($P=0.152$). However, we found that an indication of significant publication bias for Lymphatic invasion ($P=0.026$).

Prognostic role of thymidylate synthase expression in gastric cancer:

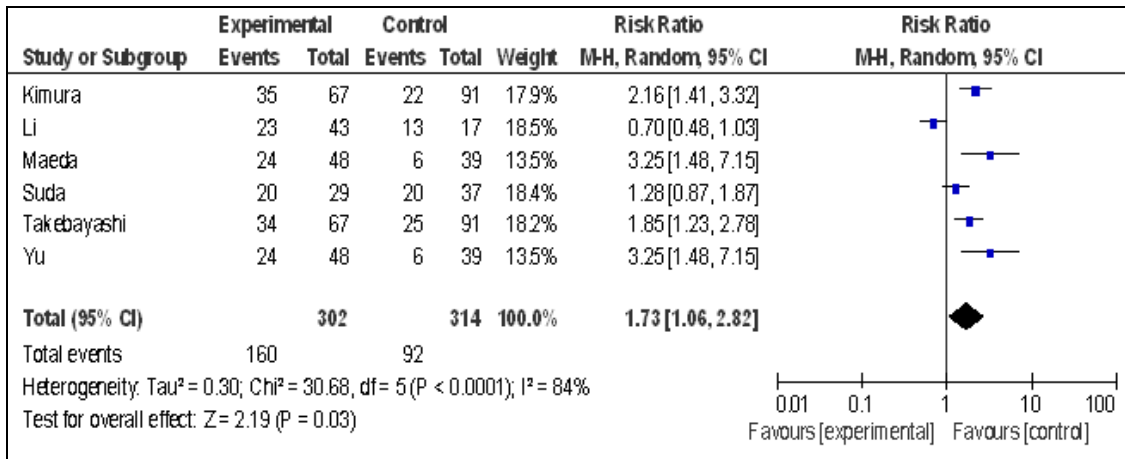


Figure 4. Forrest plot of relative risk (RR) for the association of TP expression with overall survival (OS).

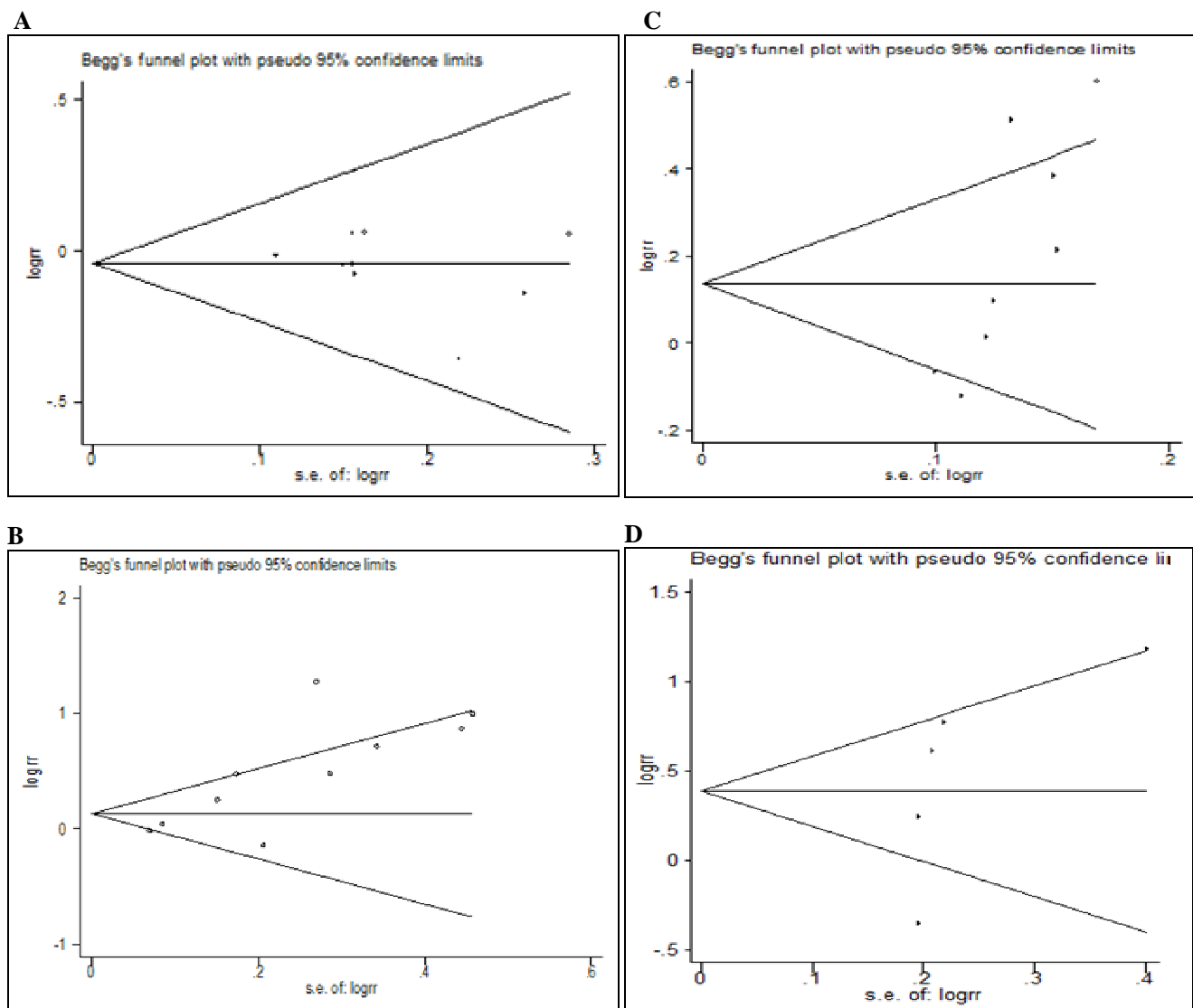


Figure 5. Begg's funnel plots for assessing the publication bias risk of studies of tumor differentiation (A), lymph node metastasis(B), lymphatic invasion(C),overall survival(D).

Discussion

To our knowledge, the present meta-analysis is the first article to systematically examine the association between the expression of TP and gastric cancer survival. Our results indicated that the expression of TP, as detected with IHC, was significantly associated with lymph node metastasis, lymphatic invasion and OS, indicating that it might be a marker for poor prognosis of gastric cancer.

TP, an enzyme involved in pyrimidine nucleotide metabolism, has been shown to have angiogenic activity [27]. It can induce endothelial cell migration and tube formation in vitro [28]. Generally, TP expression is correlated with higher microvessel density, higher tumor stage, and more metastasis. An association of TP with tumor grade is evident in bladder, cervical, and renal cell cancer, but not in the other investigated cancers [29]. Furthermore, in most cases, TP appeared to be associated with poor prognosis, although there are conflicting reports for some cancers. For example, seven of the nine studies on colon cancer reported a significant correlation between TP and bad prognosis, while Saito et al. demonstrated that TP is associated with good prognosis [30]. As for gastric cancer, Tanigawa et al. [21] reported that the expression of dThdPase was significantly associated with the intratumoral microvessel counts and the incidence of hematogenous metastasis. However, no association was found between the expression of dThdPase and the overall survival of patients with gastric carcinoma. Takebayashi et al. [11] reported that the gastric cancer patients with dThdPase-positive carcinoma showed a significantly worse prognosis than those with dThdPase-negative carcinoma. This discrepancy might be caused by differences in tissue fixation processing, and staining techniques, experience of the observer in selecting hot spot and the technique of counting the dThdPase-positive cells. Thus, a meta-analysis was performed to try to resolve these apparent discrepancies. It was notable that the association was observed in our meta-analysis of TP expression and lymph node metastasis, lymphatic invasion and OS, suggesting that this protein can be developed for clinical applications.

A dThdPase inhibitor, 6 amino-5-chlorouracil, inhibited angiogenesis induced by dThdPase in a mouse gelatin sponge implant assay [27]. In addition, Takao et al. demonstrated that inhibition of dThdPase suppressed metastasis of dThdPase-transfected KB-3-1 cells in vivo [31]. Taken together with this evidence and our results, the growth of tumor expressing dThdPase may be inhibited by suppressing dThdPase expression.

To be sure, there were some potential limitations in this study. First, in prognostic factors meta-analyses, variability in definitions, outcomes, measurements, and experimental procedures might contribute to between-study het-

erogeneity [32]. In the current meta-analysis, despite the fact that we tried to optimize standardization, some remaining variability in definitions was unavoidable. Second, as reported above, potential publication bias was a concern. We restricted our review to articles published in English or Chinese language because other languages were not accessible to the readers. This selection could favour the positive studies that are more often published in English while the negative ones tend to be more often reported in native languages [33].

Conclusion

In conclusion, TP expression was associated with increased lymph node metastasis, lymphatic permeation and unfavorable prognosis in gastric cancer, and TP expression was an independent factor influencing lymph node metastasis, lymphatic invasion and OS. Further studies of TP expression and its potential as a marker for gastric cancer prognosis in clinic are warranted.

Reference

1. Shin CM, Kim N, Yang HJ, et al.: Stomach cancer risk in gastric cancer relatives: interaction between Helicobacter pylori infection and family history of gastric cancer for the risk of stomach cancer. *Journal of clinical gastroenterology* 44: e34-e39, 2010.
2. Toi M, Hoshina S, Takayanagi T and Tominaga T: Association of vascular endothelial growth factor expression with tumor angiogenesis and with early relapse in primary breast cancer. *Cancer Science* 85: 1045-1049, 1994.
3. Macchiarini P, Dulmet E, De Montpreville V, et al.: Prognostic significance of peritumoural blood and lymphatic vessel invasion by tumour cells in T4 non-small cell lung cancer following induction therapy. *Surg Oncol* 4: 91-99, 1995.
4. Leek RD, Lewis CE, Whitehouse R, Greenall M, Clarke J and Harris AL: Association of macrophage infiltration with angiogenesis and prognosis in invasive breast carcinoma. *Cancer Res* 56: 4625-4629, 1996.
5. Kawahara A, Hattori S, Akiba J, et al.: Infiltration of thymidine phosphorylase-positive macrophages is closely associated with tumor angiogenesis and survival in intestinal type gastric cancer. *Oncology reports* 24: 405, 2010.
6. O'Brien TS, Fox SB, Dickinson AJ, et al.: Expression of the angiogenic factor thymidine phosphorylase/platelet-derived endothelial cell growth factor in primary bladder cancers. *Cancer Res* 56: 4799-4804, 1996.
7. Ishikawa F, Miyazono K, Hellman U, et al.: Identification of angiogenic activity and the cloning and expression of platelet-derived endothelial cell growth factor. *Nature* 338: 557, 1989.
8. Moghaddam A, Zhang H-T, Fan T, et al.: Thymidine phosphorylase is angiogenic and promotes tumor

- growth. Proceedings of the National Academy of Sciences 92: 998-1002, 1995.
9. Pauly JL, Schuller MG, Zelcer AA, Kirss TA, Gore SS and Germain MJ: Identification and comparative analysis of thymidine phosphorylase in the plasma of healthy subjects and cancer patients. *J Natl Cancer Inst* 58: 1587-1590, 1977.
 10. Pauly JL, Paolini NS, Ebarb RL and Germain MJ: Elevated thymidine phosphorylase activity in the plasma and ascitic fluids of tumor-bearing animals. In: Proceedings of the Society for Experimental Biology and Medicine. Society for Experimental Biology and Medicine (New York, NY) Royal Society of Medicine, pp 262-267, 1978.
 11. Takebayashi Y, Yamada K, Miyadera K, et al.: The activity and expression of thymidine phosphorylase in human solid tumours. *Eur J Cancer* 32A: 1227-1232, 1996.
 12. Kimura H, Konishi K, Nukui T, et al.: Prognostic significance of expression of thymidine phosphorylase and vascular endothelial growth factor in human gastric carcinoma. *Journal of surgical oncology* 76: 31-36, 2001.
 13. Zhou L, Jiang Y, Yan T, et al.: The prognostic role of cancer stem cells in breast cancer: a meta-analysis of published literatures. *Breast Cancer Res Treat* 122: 795-801, 2010.
 14. Parmar MK, Torri V and Stewart L: Extracting summary statistics to perform meta-analyses of the published literature for survival endpoints. *Stat Med* 17: 2815-2834, 1998.
 15. Konno S, Takebayashi Y, Aiba M, Akiyama S-I, Ogawa K. Clinicopathological and prognostic significance of thymidine phosphorylase and proliferating cell nuclear antigen in gastric carcinoma. *Cancer letters* 166: 103-111, 2001.
 16. KORIYAMA C, AKIBA S, SHIMAOKA S, ITOH T, AKIYAMA S-I and EIZURU Y: Frequent Expression of Thymidine Phosphorylase in Epstein-Barr Virus-associated Gastric Carcinoma of Diffuse Type. *Anti-cancer research* 30: 2431-2437, 2010.
 17. Maeda K, Chung Y, Ogawa Y, et al.: Thymidine phosphorylase/platelet-derived endothelial cell growth factor expression associated with hepatic metastasis in gastric carcinoma. *British journal of cancer* 73: 884, 1996.
 18. Saito H, Tsujitani S, Oka S, et al.: The expression of thymidine phosphorylase correlates with angiogenesis and the efficacy of chemotherapy using fluorouracil derivatives in advanced gastric carcinoma. *British journal of cancer* 81: 484, 1999.
 19. Suda Y, Kuwashima Y, Tanaka Y, et al.: Expression of thymidylate synthase and thymidine phosphorylase in recurrence and survival rates of advanced gastric cancer. *Gastric Cancer* 2: 165-172, 1999.
 20. Takebayashi Y, Miyadera K, Akiyama Si, et al.: Expression of thymidine phosphorylase in human gastric carcinoma. *Cancer Science* 87: 288-295, 1996.
 21. Tanigawa N, Amaya H, Matsumura M and Shimomatsuya T: Correlation between expression of vascular endothelial growth factor and tumor vascularity, and patient outcome in human gastric carcinoma. *Journal of clinical oncology* 15: 826-832, 1997.
 22. Zhang HX, Li XZ, Zhang JM, et al.: Expression and significance of thymidine phosphorylase and D2-40 in gastric carcinoma. *Acta Acad Med Weifang* 33: 436-438, 2011.
 23. Fan H, Wu XL, Tang CW: Expression of thymidine phosphorylase and its effect on cell proliferation in gastric carcinoma. *J Clin Intern Med* 2: 132-133, 2005.
 24. Yu XQ, Deng CS, Zhu YQ, et al.: Correlation between Thymidine Phosphorylase Expression and Hepatic Metastasis in Human Gastric Cancer. *Med J of Wuhan Univ* 25: 202-205, 2004.
 25. Li LH, Li G, Zhou LH, et al.: Relationship between the expression of thymidine phosphorylase and angiogenesis in advanced gastric carcinoma. *Shaanxi Med J* 35: 1576-1578, 2006.
 26. Yang FQ, Shi YR, Qu JJ, et al.: Expressions of thymidine phosphorylase and matrix metalloproteinase-1 in gastric carcinoma. *Qingdao Med J* 44: 95-98, 2012.
 27. Miyadera K, Sumizawa T, Haraguchi M, et al.: Role of thymidine phosphorylase activity in the angiogenic effect of platelet derived endothelial cell growth factor/thymidine phosphorylase. *Cancer Res* 55: 1687-1690, 1995.
 28. Moghaddam A, Zhang HT, Fan TP, et al.: Thymidine phosphorylase is angiogenic and promotes tumor growth. *Proc Natl Acad Sci U S A* 92: 998-1002, 1995.
 29. Bronckaers A, Gago F, Balzarini J and Liekens S: The dual role of thymidine phosphorylase in cancer development and chemotherapy. *Med Res Rev* 29: 903-953, 2009.
 30. Saito S, Tsuno N, Nagawa H, et al.: Expression of platelet-derived endothelial cell growth factor correlates with good prognosis in patients with colorectal carcinoma. *Cancer* 88: 42-49, 2000.
 31. Takao S, Akiyama SI, Nakajo A, et al.: Suppression of metastasis by thymidine phosphorylase inhibitor. *Cancer Res* 60: 5345-5348, 2000.
 32. Simon R and Altman DG: Statistical aspects of prognostic factor studies in oncology. *Br J Cancer* 69: 979-985, 1994.
 33. Egger M, Zellweger-Zahner T, Schneider M, Junker C, Lengeler C and Antes G: Language bias in randomised controlled trials published in English and German. *Lancet* 350: 326-329, 1997.

Correspondence to:

Nan Li
Department of Gastrology
Te 309 Hospital of Chinese PLA
Beijing, 100091, China