

A novel segmentation method of medical CBCT image in liver organ based on Bayesian network.

Huiling Guo¹, Haizhi Hu¹, Guobing Fan^{2*}

¹College of Computer Science and Technology, Zhoukou Normal University, Henan, Zhoukou, PR China

²Department of Basic Subjects, Hunan University of Finance and Economics, Hunan, Changsha, PR China

Abstract

Introduction: This paper proposed a kind of segmentation method for medical CBCT image in liver organ based on Bayesian network.

Methods: Taking CBCT medical image of liver organ as a focus of medical image segmentation and to segment the area we are interested in with noise elimination and image enhancement. In order to show multiple image information including the liver organ CBCT image color, texture, shape and other features, image information can be extracted, and the extracted image features can be classified from the perspective of data mining by Bayesian network.

Results: The method ensures that the target points of the liver organ CBCT image are clearly visible, which is not only suitable for the normal image registration, but also for the disordered image registration. Bayesian network method has good organization ability to distinguish pixels with similar gray level belonging to different tissues in the image, and map them back to the image space, so that tissue extraction from liver organ CBCT images has a good effect.

Conclusion: The CBCT images are analysed based on medical image database to better achieve the required characteristics in data mining, extraction of non-rigid registration and image segmentation technology. And the result shows that this kind of method based on Bayesian network is a good theoretical method that can achieve expected outcome and the accuracy rate is good with high practical application.

Keywords: Medical CBCT image, Liver organ, Segmentation method, Bayesian network, Probability.

Accepted on June 24, 2017

Introduction

Medical image segmentation is to separate an image into multiple regions with similar characteristics, and propose new technology and processing based on the area that we are interested. This is an important method for researchers working in medical image processing and analyzing [1,2]. The focus of medical image segmentation is to segment the area we are interested in, such as the lesion area, tumor, etc., and make our segmentation result closing enough to anatomical structure, so as to help the clinicians analyzing patients' condition, and making diagnosis and treatment correctly. Although there are many different segmentation methods, we have not yet developed an effective segmentation method which can satisfy the clinical demands [3,4]. Due to the difference of individual liver and structures, combined with the lesion area worse a lot more, the clinical algorithm demands higher requirements on medical image segmentation accuracy. On the other hand, the image noise and artifacts affect the image analyzing, making the existing image segmentation algorithms far away from the clinical demands [5,6].

Methodology

A Bayesian network is a Directed Acyclic Graph [7] (DAG) that is composed by representative variable nodes and directed edges. The directed edge uses the parent nodes to point to the descendant nodes. In Bayesian network, there are some nodes called root nodes. They have the prior probability distribution which is associated with them and that can be directly provided. The non-root nodes are called child nodes. The source is known as parent nodes and each child node has a conditional probability distribution of the parent node under value state. Each node in Bayesian network has a Conditional Probability Table (CPT) [8,9].

If A represents the node variable and B_1, B_2, \dots, B_n refers to the parent node of A . For node A , the CPT table refers to the value of $P(A|B_1, B_2, \dots, B_n)$. The correlation degree between nodes is characterized by the conditional probability value. The conditional probability table of each variable is calculated by the value of its parent node. For the variable without parent nodes, it can be obtained by the historical statistics as well as the knowledge and the experience of experts. A simple Bayesian network diagram is shown in Figure 1.

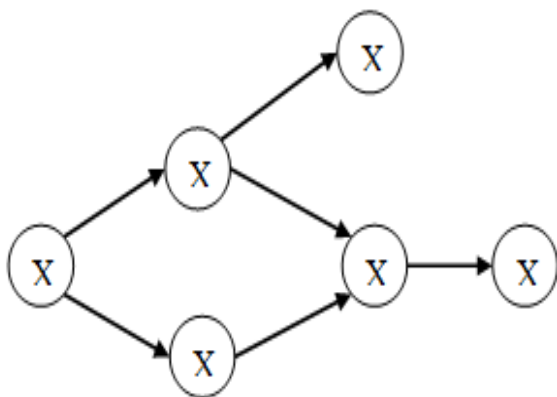


Figure 1. Bayesian network diagram.

When the network diagram has the relationships and the conditional probability tables between nodes, the Bayesian network can express the joint probability of all nodes in network. Meanwhile, the network can calculate the probability information in any node according to the prior probability information and the values of some nodes. The joint probability $P(X_1, X_2, \dots, X_n)$ of Bayesian network is shown in followed formula.

$$P(X_1, X_2, \dots, X_n) = \prod_{i=1}^n (p_i(X_1, X_2, \dots, X_n))$$

Through the above formula, the distribution function of joint probability of Bayesian network is shown in followed formula.

$$P(X_1, X_2, \dots, X_6) \\ \Downarrow \\ P(X_6/X_5)P(X_5/X_3, X_2)P(X_4/X_2, X_1) \\ P(X_3/X_1)P(X_2/X_1)P(X_1)$$

For the construction of Bayesian network, there are five steps:

Step 1. Determining the nodes, namely determining the target nodes of research questions;

Step 2. Determining the relationships between nodes;

Step 3. Connecting with related nodes and constructing Bayesian network diagram;

Step 4. Assigning the nodes in constructed network diagram;

Step 5. Reckoning the Bayesian network according to the relationships between nodes and the mathematical nature of Bayesian network.

Results

The range of the set probability is (0, 1) and the value of all pixels represents the probability belonging to the liver. As shown in the Figure 2.

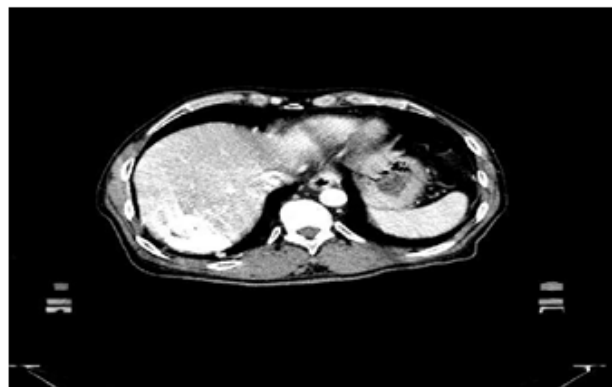


Figure 2. Liver probability map.

Because the liver lesions have large difference in shape, we use a sparse linear combination optimization to solve the over segmentation or under segmentation will be combined with the sparse shape and probability map, through TV-L1 preprocessing, the segmentation result was obtained from liver is shown in Figure 3.

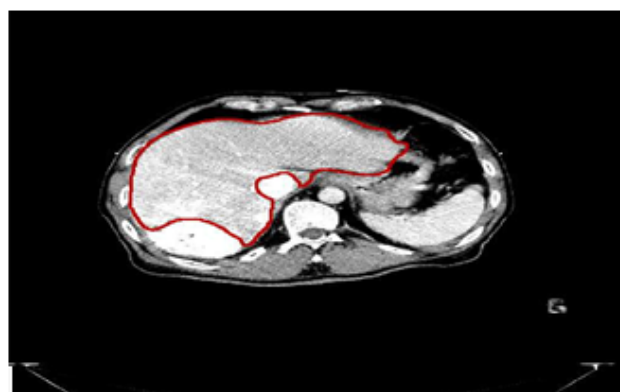


Figure 3. Combined with sparse shape model segmentation results.

The results show that using SIFT to automatically match the feature points can effectively improve the segmentation results of sparse shape. It is proved that the segmentation of liver CT image can be improved by combining the probability map and the shape model.

Conclusion

Medical images included abundant characteristic information have been divided into data's characteristic mining and de-noising processed data analysis by data mining and computer technology, and the characteristic extraction based on Bayesian network analysis is obtained, and image data will be further analysed by de-noising processed images. The segmentation method proposed in this paper can be applied to CBCT-based image-guided radiation system and PET. CT imaging system, can improve the accuracy of radiation therapy, and improve the efficiency of clinicians and oncologists.

Acknowledgment

This work was supported by the Natural Science Foundation of Hunan Province, China (Grant No.2016JJ4012).

References

1. Kumar MJ, Raj Kumar GVS, Vijay Kumar Reddy R. Review on image segmentation techniques. *Int J Sci Res Eng Technol* 2014; 3: 992-997.
2. Mesanovic N. Automatic CT image segmentation of the lungs with region growing algorithm. 18th International Conference on Systems, Signals and Image Processing-IWSSIP 2011.
3. Mansoor A. Segmentation and image analysis of abnormal lungs at CT: current approaches, challenges, and future trends. *Radio Graphics* 2015; 35: 1056-1076.
4. Pu J. Adaptive border marching algorithm: automatic lung segmentation on chest CT images. *Comp Med Imag Graphics* 2008; 32: 452-462.
5. Somasundaram K, Kalavathi P. Analysis of imaging artifacts in MR brain images. *Oriental J Comput Sci Technol* 2012; 5: 135-141.
6. Duan X. Electronic noise in CT detectors: impact on image noise and artifacts. *Am J Roentgenol* 2013; 201: 626-632.
7. Zeng D, Gu L, Guo S. Joint optimization of task scheduling and image placement in fog computing supported software-defined embedded system. *IEEE Trans Comp* 2016; 22: 162-174.
8. Daly R, Qiang S, Stuart A. Review: learning Bayesian networks: approaches and issues. *Knowl Eng Rev* 2011; 26: 99-157.
9. Das B. Generating conditional probabilities for Bayesian networks: Easing the knowledge acquisition problem. *ARXIV Preprint* 2004.

***Correspondence to**

Guobing Fan

Department of Basic Subjects

Hunan University of Finance and Economics

PR China