

Tissue Science and Molecular Biology, Stem Cells & Separation Techniques

June 06-07, 2019 | London, UK

Differentiation of human dental pulp stem cells (hDPSCs) into epithelial and neural lineages with traditional Indian medicine

Mahesh Shivaji Chavan

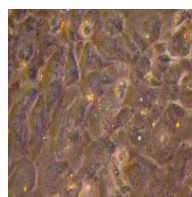
Dr D Y Patil Dental College, India

It is estimated that up 80% of the Asian and African population use traditional medicine therapies for primary healthcare. Our preliminary data has shown differentiation of human dental pulp stem cells (hDPSCs) into neuron-like and epithelium-like cell lineages with different concentrations of traditional Indian medicine without standard differentiation cocktails. These are very promising and interesting results in which with low concentration epithelial like differentiation was seen while with higher concentration neural like differentiation was seen.

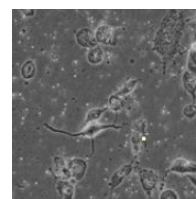
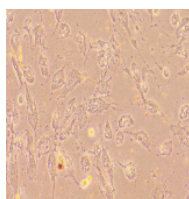
Speaker Biography

Mahesh Shivaji Chavan is 35 years old and has completed MDS in the subject of oral medicine and radiology in Dr D Y Patil Dental College, Pune India. He has over 42 publications that have been cited over 250 times. Honored with PhD degree in oral medicine and radiology in 2018. Invited speaker for oral presentation on "Oral Potentially malignant disorders" in 7th BIT Cancer Congress, Nanjing China 2014 and selected as young scientist under ITS scheme of department of science and technology govt. of India. First rank in M D S examination (Oral Medicine and Radiology) June-July 2009 in Dr D Y Patil Dental College, Pune and highest marks among all postgraduate students in MDS examination) June-July 2009 of all courses in Dr D Y Patil Dental College, Pune.

e: drmaheshschavan@gmail.com



Epithelial-like cells



Neural-like cells

 Notes: