

Spectral presentation of *Plasmodium falciparum* malaria in rural Karnataka (Southern India).

Ravishankar MS, Mohan ME, Ramesh TP*, Dayananda G**

Department of Medicine and Physiology**, BGS Global Institute of Medical Sciences, Bengaluru 560060, Karnataka, India

*Skanda Life Sciences Pvt Ltd, Bengaluru 560091, Karnataka, India

Abstract

Plasmodium falciparum (*P. falciparum*) malaria is an increasingly recognized cause of malaria in Mandya, a rural pocket of the southern part of India. There is a paucity of detailed clinical studies of naturally acquired infections like malaria from these places. 345 subjects were recruited for the study. Smears positive for falciparum malaria were considered diagnostic. Detailed history, physical examination and required investigations were done in all cases. Three major treatment categories were designated as those who received chloroquine with primaquine, artesunate with mefloquine and quinine with doxycycline. Majority subjects were in the age group of 26 – 35 years, 32% subjects used personal protective measures like mosquito nets. 56% of the subjects belong to the middle socio-economic status. Most subjects sought medical care within 1 to 5 days of onset of symptoms. Fever was the commonest symptom followed by headache, nausea with vomiting, myalgia, cough, altered sensorium, abdominal pain, jaundice. The triad of malaria, fever, pallor and splenomegaly were noted in the study group. Subsets uncomplicated cases (282) of *P. falciparum* malaria patients responded to chloroquine treatment (12.8%), quinine treatment (10.6%) and to artesunate treatment (76.6%). Some uncomplicated *P. falciparum* malaria patients (62) received artesunate as second line of treatment and responded well. Those with complicated malaria (125) were treated with artesunate (60) and quinine (65). 4% mortality was observed in this study, i.e. 14 among the complicated *P. falciparum* malaria group.

Keywords: complicated, fever, malaria, pallor, plasmodium falciparum, splenomegaly, uncomplicated.

Accepted May 19 2015

Introduction

Malignant tertian malaria is an Anopheles mosquito transmitted tropical disease caused by *Plasmodium falciparum* (*P. falciparum*). The clinical features range from no or mild symptoms to severe disease and death as observed in many parts of the world [1]. The global burden of malaria is largely carried by the endemic regions with as many as 500 million cases annually and a death toll of one million each year [2]. Human migration and increased travel to endemic areas have led to many cases of imported malaria in countries where it had been priorly eradicated, making it a global health problem [3]. Annually, about 10,000 - 30,000 travellers to endemic areas fall ill with malaria after returning home [4].

Geographically, malarial infection is found throughout the tropics. Malaria transmission rare at temperatures below 16° C or above 33° C and altitudes greater than 2000 m

since these environmental extremes do not favor parasite development in mosquito (sporogony) [5]. Five species of *Plasmodium* (*P. falciparum*, *P. vivax*, *P. malariae*, *P. ovale*, and *P. knowlesi*) cause naturally acquired malaria in humans. Most often, severe malaria is caused by *P. falciparum*. Estimates indicate that around 150 returning travellers die each year from imported malaria and are manifested by severe anemia, renal failure, acute respiratory failure, hypoglycemia, shock, and / or central nervous system involvement [1,2,6]. *P. vivax* usually presents as a benign febrile acute disease [2]. *P. knowlesi* is primarily a chronic infection of macaques with transmission occurring in many Southeast Asian countries [6]. *P. falciparum* predominates in Africa, whereas *P. vivax* is more endemic in central parts of South America, North America, Middle east and Indian Subcontinent. *P. ovale* is rare outside West Africa. *P. malariae* is also relatively uncommon outside Africa [5].

In India about 50% of the infections reported are due to *P. vivax*, a little more than 40% due to *P. falciparum* and lesser incidences of mixed infection [7]. *P. malariae* infections are <1% and are reported from Tumkur and Hassan districts of Karnataka [8]. The present study was conducted in Mandya, a rural district of Karnataka, India. This place gets a modest rain fall and has a tropical temperature. This region is considered as an endemic area for malaria due to its water bodies - ponds, lakes and canal irrigation, adding to the morbidity and mortality due to *P. falciparum* malaria. This study aims to understand the symptomatic presentation, clinical course, complications and their response to treatment in patients with *P. Falciparum* malaria infection.

Patients and Methods

A prospective study design was adapted and the study was conducted in the department of General Medicine, Adichunchanagiri Institute of Medical Sciences, Nagamangala, Mandya over a period of 10 years. (April 2001 – December 2010). The study included 345 subjects who were smear positive for *P. falciparum* malaria. The subjects were recruited from those attending the outpatient department and those admitted in the department of General Medicine. All subjects in the study gave a written consent for their participation. The study was approved by the institutional ethics committee.

Study subjects gave a detailed history including the duration and intensity of fever, any associated chills / rigors. Also symptoms like headache, myalgia, cough, breathlessness, nausea, bleeding tendencies, dark colored / decreased urine output and altered sensorium / convulsions were enquired. Past history of malarial infection, blood transfusion and treatments received were taken in detail. History of similar illness among the family members or in the neighborhood and information about use of protective measures against mosquitoes were enquired.

Detailed physical examination including body temperature, pulse, blood pressure, assessment of pallor, jaundice and hydration status was done. Systemic examination included abdominal examination to assess hepato-splenomegaly with details like size, consistency, tenderness and surface texture were noted. Central nervous system, respiratory system and cardiovascular system were routinely examined for all subjects.

On presentation with fever and chills, the subjects' blood was examined for malarial parasite. Samples were centrifuged at high speed in micro capillary PCV tube at 6000 rpm for 5 -10 minutes. The buffy coat formed was used to make a thin smear, stained with Leishman's stain and observed under oil immersion [9, 10]. Smears were repeated every 8 to 12 hrs for the next 48 hours in suspected cases when the first smear did not reveal

parasite. Also smears were repeated on completion of treatment and on the 7th day to see the response to treatment.

Complete blood counts, routine urine examination, random blood sugar, serum urea, serum creatinine, liver function tests were done in all subjects. Other investigations like chest x-ray and cerebrospinal fluid examination were done as and when required.

Treatment

All uncomplicated cases of *P. falciparum* malaria who visited outpatient department were treated with oral medications and complicated cases (those which had complications at presentation and those earlier treated in outpatient but not responding to orals / intolerance to medications) were admitted and treated as depicted in the Flow chart 1. Choice of treatment regimens of Chloroquine group (Chloroquine and primaquine), Quinine group (quinine and doxycycline) and Artesunate group (artesunate and mefloquine) were based on the socio-economic status, tolerability and clinical presentation (duration, presence of co-morbidities, complications, treatment regimens [11,12,13].

Oral chloroquine (1500 mg) was given as 600 mg stat, 300 mg after 6 hrs and 300 mg daily for next 2 to 7 days; along with above treatment patients received a single dose of primaquine 45 mg. Intravenous infusion of chloroquine was given in intolerant subjects at a dose of 10 mg/kg (max 600 mg) body weight with isotonic saline over 8 hours followed by 15 mg/kg (max 900 mg) body weight over 24 hours.

Oral quinine was given at 600 mg three times daily for 7 days. Intravenous quinine was given 20 mg/kg body weight as bolus with 5% dextrose infusion over 4 hrs and then followed by maintenance dose of quinine 10 mg/kg body weight with 5% dextrose over 2-4 hrs every 8th hourly. When the patient was able to take orally, it was changed to oral quinine 600 mg at 8th hourly. The total duration of the quinine treatment was 7 days. In addition oral doxycycline 100 mg twice daily for 7 days was given.

Artesunate was given in dose of 2.4 mg/kg body weight stat with isotonic saline, next followed by 1.2 mg/kg body weight after 6 hours and then 1.2 mg/kg body weight daily for 4 days. When patient was able to take orally it was changed to oral artesunate 50 mg, BID. In addition oral mefloquine 25 mg/kg body weight given in 2 divided doses with 8-12 hours apart.

Other ancillary treatments given were antipyretics (acetaminophen), intravenous 25% dextrose, intravenous fluids and blood transfusion. The cases were fol-

lowed subsequently after discharge in the outpatient department.

Results

During the study period, 3230 peripheral blood smear samples from suspected subjects' with malaria was examined. Amongst these 876 were positive for malaria. 397 of the malaria positives were due to *P. falciparum*. The slide positive rate (SPR) is 27.12 % and slide falciparum rate (SFR) 12.29 %. 345 cases (of 397) that were confirmed parasitologically and came for regular follow-up were taken for the study. Subjects' details and baseline characteristics like age, co-morbidities, symptom characteristics and duration of hospital stay are as shown in table 1.

The numbers of positive *P. falciparum* malaria cases gradually increased from April, peaking in June - July and gradually declined in August - September. The commonest symptom was fever (all cases) followed by nausea with vomiting, headache followed by others as illustrated in the table 2. Fever, pallor and splenomegaly were the predominant signs amongst the others as shown in the table 3. Leucocyte and Platelet count was normal in a fairly large number of patients. Smaller subsets had abnormal counts.

The commonest complications [14] observed was jaundice followed by cerebral malaria, renal impairment, hypoglycaemia, hepatorenal syndrome and haematological (DIC, pancytopenia) as summarized in table 4. Many patients had more than one complication.

Treatment and response of patients with Chloroquine group (Chloroquine and primaquine), Quinine group (quinine and doxycycline) and Artesunate group (artesunate and mefloquine) as shown in table 5 and table 6.

Discussion

Since 1995 onwards there is significantly increasing incidence of malaria in Mandya District as per reports from District health office (DHO). Also there is an increase in the number of falciparum malaria cases. In the present study 3230 suspected cases of malaria were examined by peripheral blood smear, 876 were confirmed and 397 were falciparum malaria.

Sex Distribution

Falciparum malaria was profound in males than female similar to the findings of other studies [15, 16]. The reasons put forward for this difference is higher exposure of adult males to risk of malaria, because of the outdoor activities of the males and females are better clothed than males.

Age Distribution

Maximum study subjects were in the third and fourth decade (age group of 26 - 35 years) followed by other age groups. This is consistent with the observation that malaria incidence is higher in young adults because of their outdoor activities and mobility [17].

Socioeconomic Status

About 50% of patients belonged to the middle socioeconomic group and 34% belonged to lower socioeconomic group. The casual attitude to prophylaxis suggests the reason for the higher incidence in middle socioeconomic group. The lesser incidence in upper socioeconomic group may be due to better personal protective measures.

Seasonal Incidence

Monsoon and post monsoon period (July to November) showed maximum malaria incidence in previous studies. In the present study, malaria gradually increased from April peaking in June - July and showed gradually declined in August - September, the reason put forward for the above high incidence is due to increased mosquito breeding.

Symptomatology

More than half of the patients sought medical help immediately or within 10 days of symptoms. Considerable numbers (about 16%) sought medical treatment after more than 30 days with symptoms on arrival at this study center. This observation can be attributed to the simple reason that this hospital is referral centre (Tertiary Care Centre).

Fever and Headache

All patients presented fever (intermittent / continuous). This observation is consistent with other studies which suggest that fever with chills and rigor is the commonest mode of presentation [15]. Headache was the second commonest symptom similar to the study previously reported [18].

Altered Sensorium and Convulsions

Altered sensorium and Convulsions was present in 8% and 2% of cerebral malaria patients respectively and was comparable with the earlier study [15, 16].

Bleeding and Jaundice

Bleeding was present as melena in a small number (2%) of *P. falciparum* malaria. Jaundice associated with vomiting was a significant symptom in many (16%) patients with fever of 10 days as reported in earlier studies [15,18].

Signs

Fever, splenomegaly and anaemia described as the classical triad of malaria were the commonest findings in this study. Mild to moderate splenomegaly with firm consistency was observed. Most cases of splenomegaly had as-

sociated mild hepatomegaly. Anaemia was present in 64% of the patients as shown in the table 9 as one of the signs of the clinical triad of malaria.

Table 1. Characteristics of 345 falciparum malaria patients in our rural tertiary care hospital during April 2001 to December 2010.

Characteristics	Patients (n = 345)	Percentage (%)
<i>Sex</i>		
Male	224	64.93
Female	121	35.07
<i>Treatment modality</i>		
In patient treatment	280	81.15
Outpatient treatment	94	27.25
<i>Age groups in years</i>		
18 – 25	83	24
26 – 35	89	26
36 – 45	83	24
46 – 55	62	18
56 – 65	14	4
66 – 75	14	4
Comorbidity		
Diabetes	26	8
Hypertension	20	5
Ischemic heart disease	5	2
<i>Socio Economic Status</i>		
Low	117	34
Middle	193	56
Upper	35	10
<i>Preventive measure taken in the socio economic status</i>		
Low	28	8
Middle	69	20
Upper	14	4
<i>Duration of symptoms in days</i>		
1 – 5	131	38
6 – 10	76	22
11 – 15	76	22
16 – 20	7	2
21 – 25	0	0
26 – 30	0	0
> 30	55	16
<i>Duration of hospital stay (days)</i>		
1 – 2	94	27
3 – 5	179	52
6 – 10	72	21

Total leucocyte count

Total leucocyte count was in normal limits in majority of the patients with fewer cases of leucocytosis in those with anti malarial treatment without antibiotics. Leucopenia was present in very few and those with cerebral malaria as shown in the table 9.

Out come and mortality

Out of 282 uncomplicated cases of P. falciparum malaria, 12.8% responded to chloroquine, 10.6% responded to qui-

nine and 76.6% responded to artesunate. The uncomplicated P. falciparum malaria patients (22%) who received

Table 2. Symptom analysis in patients with plasmodium falciparum malaria.

S.N.	Symptoms	No. of Patients	%
1	Fever	345	100
2	Nausea & Vomiting	193	56
3	Abdominal pain	110	32
4	Headache	145	42
5	Myalgia and malaise	90	26
6	Cough	69	20
7	Jaundice	55	16
8	Dark colored urine	41	12
9	Abdominal mass	41	12
10	Diarrhea	35	10
11	Altered sensorium	28	8
12	Convulsions	7	2
13	Decreased urine output	7	2
14	Urtecaria	7	2
15	Bleeding	7	2

Table 3. Common signs observed in our Plasmodium falciparum malaria patients.

Signs	Features	No. of Patients	Per- centage (%)
	Fever	311	90
	Pallor	269	78
	Splenomegaly	248	72
	Hepatomegaly	90	26
	Icterus	62	18
	Altered sensorium	4	8
	Urtecaria	1	2
Size	Mild Splenomegaly (1-3 cm)	131	38
	Moderate Splenomegaly (3-7cm)	110	32
	Severe Splenomegaly (> 7cm)	7	2
Consistency	Soft	35	10
	Firm	213	62
Tenderness	Present	28	8
	Absent	220	64

artesunate as second line of treatment responded well. 125 complicated cases of malaria were treated with artesunate (60) and quinine (65). 4% mortality was observed in this study, i.e. 14 among the complicated P. falciparum malaria patients (9 in IV Quinine group and 5 in IV Artesunate group). Hyper parasitaemia, multiorgan failure, hypoglycaemia and delay in seeking treatment may have probably added to the increase risk of mortality.

Table 4. Complications of plasmodium falciparum malaria observed in our study.

Sl. No	Complications	No. of Patients	Percentage (%)
1	Jaundice	62	18
2	Cerebral malaria	28	8
3	Renal impairment	21	6
4	Hepatorenal syndrome	14	4
5	Haematological	7	2
6	Hypoglycaemia	14	4

Table 5. Treatment given to Plasmodium falciparum malarial cases.

Sl. No.	Drugs	Route of Administration	No. of Patients	Total	Percentage (%)
1	Chloroquine + Primaquine	Oral	54	84	20
		Injection	30		
2	Quinine + doxycycline	Oral	57	109	27
		Injection	52		
3	Artesunate + mefloquine	Oral	137	214	53
		Injection	77		

Flow chart showing treatment received in the study group patients

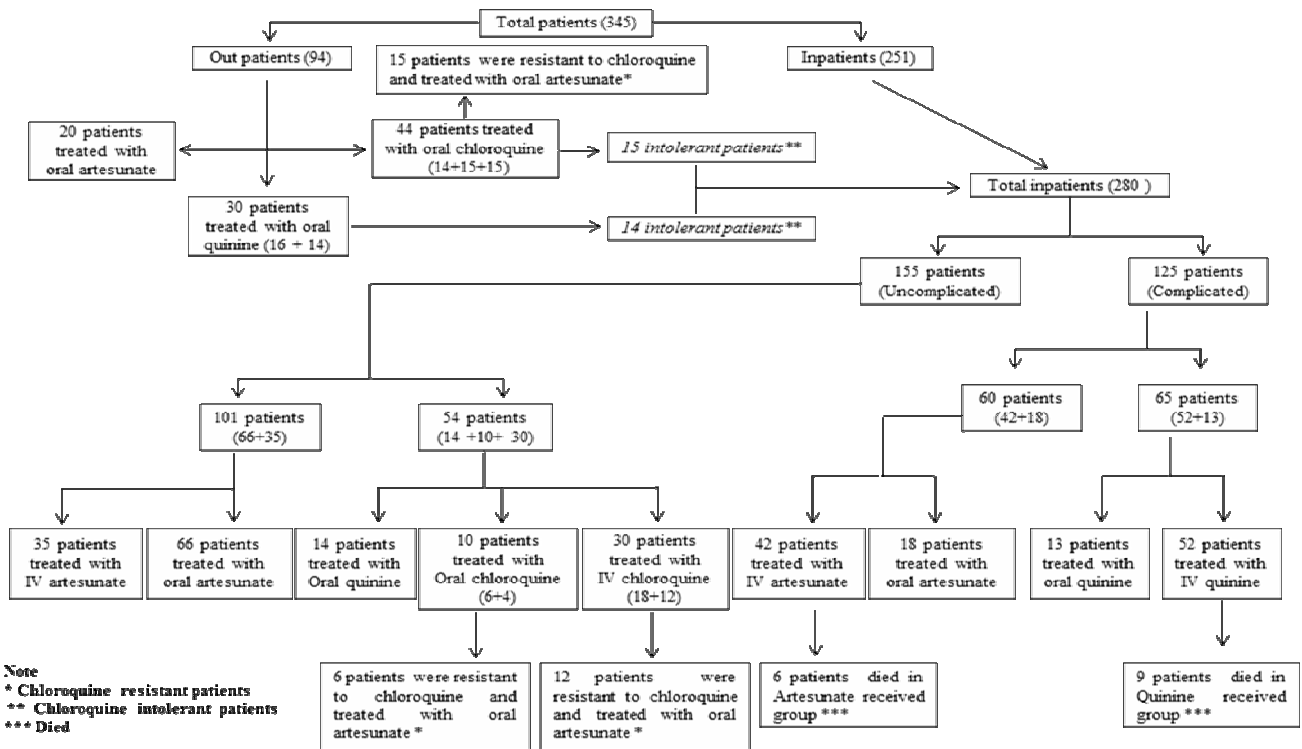


Table 6. The treatment received and response by plasmodium falciparum malarial patients.

Drugs	No. of patients received	Recovered	% of recovered	Not recovered	% of not recovered
Chloroquine group	84	36	43.0	48 (30*+18**)	57.0
Quinine group	109	86	79.0	23(14*+9***)	21.0
Artesunate group	214	209	98.0	5***	2.0

*Patients retreated with artesunate for drug induced complications; **Chloroquine resistant patients who received artesunate
*** Died Patients.

References

1. Klaske Vliegenthart-Jongbloed, Mariana de Mendonça Melo, Marlies E van Wolfswinkel, Rob Koelewijn, Jaap J van Hellemond and Perry JJ van Genderen. Severity of imported malaria: protective effect of taking malaria chemoprophylaxis. *Malaria Journal* 2013; 12: 265.
2. Wellens TE, Miller LH: Two worlds of malaria. *New England Journal of Medicine* 2003; 349: 1496-1498.
3. André V. Lomar, Jose E. Vidal, Frederico P. Lomar, Carmen Valente Barbas, Gustavo Janot de Matos and Marcos Boulos. Acute Respiratory Distress Syndrome Due to Vivax Malaria: Case Report and Literature Review. *The Brazilian Journal of Infectious Diseases* 2005; 9 (5): 425-430.
4. WHO: International travel and health. Geneva: World Health Organization, 2008.
5. Nicholas J. white Chapter 61: Manson's tropical diseases, 20th edition, ELBS 1996; 1087-1164.
6. Cyrus Daneshvar, Timothy M. E. Davis, Janet Cox-Singh, Mohammad Zakri Rafa'ee, Siti Khatijah Zakaria, Paul C. S. Divis, and Balbir Singh. Clinical and Laboratory Features of Human Plasmodium knowlesi Infection. *Clinical Infectious Diseases* 2009; 49: 852- 860.
7. CDC. 2015. Parasites and Health: Malaria, http://dpd.cdc.gov/dpdx/HTML/Frames/M-R/Malaria/body_Malaria_page2.htm
8. Park K. Park's text book of preventive and social medicine 15th edition. Chapter 5, Banasidas Bhanot, 1997; 188-201.
9. Bhattacharya PK, Bhattacharya R, Bhattacharya R, Bhattacharya U, Pathak S, Mukherjee D. Malaria diagnosis from Buffy coat thin smear stained by leishman stains BMJ Rapid response, 9 August 2008.
10. DK Mendiratta, K Bhutada, R Narang, P Narang. Evaluation of different methods for diagnosis of P. falciparum malaria. *Indian Journal of Medical Microbiology* 2006; 24 (1): 49-51.
11. Guidelines for diagnosis and treatment of malaria. National vector borne disease control program. 2009; 1-18.
12. Guidelines for treatment of malaria. World health organization. Switzerland 2010, 1-211.
13. National drug policy on malaria. Ministry of health and family welfare, directorate of NVBDCP 2008
14. Agarwal AK, Yadav P. severe and complicated malaria. *Association of physician in India. Jypee.* 2005, 33-45.
15. Murthy GL, Sahay RK, Srinivasan VR, Upadhaya AC, Shantaram V, Gayatri K. Clinical Profile of falciparum malaria in tertiary care hospital. *Journal of Indian Medical Association* 2000; 98 (4): 162-169.
16. Shukla MM, Singh N, Singh MP, Tejwani BM, Srivastava DK, Sharma VP. Cerebral malaria in Jabalpur, India. *Indian Journal of Malariology* 1995; 32 (2); 70-75.
17. Beljaev AE, Sharma GK, Brohult JA, Haque MA. Studies on the detection of malaria at primary health centres. Part II. Age and sex composition of patients subjected to blood examination in passive case detection. *Indian Journal of Malariology* 1986; (1): 19-25.
18. Mehta SR, Naidur G, Chander V, Singh IP, Joshi S, Ahuja RC. Falciparum malaria: Present day problem. An experience with 424 cases. *J Assoc Phys India* 1989; 37: 264-266.

Correspondence to:

Dayananda G
 Department of Physiology
 BGS Global Institute of Medical Sciences
 Bengaluru 560060, Karnataka
 India