

Risk factors for adverse fetal outcomes in patients with intrahepatic cholestasis of pregnancy.

Li Li¹, Lin Cong^{1*}, Yuanhua Chen², Yuanyuan Yang¹

¹Department of Obstetrics and Gynaecology, the First Affiliated Hospital of Anhui Medical University, PR China

²Department of Histology and Embryology, Anhui Medical University, PR China

Abstract

Objective: To evaluate relevant risk factors for adverse fetal outcomes among patients with Intrahepatic Cholestasis of Pregnancy (ICP).

Methods: We performed a retrospective analysis, data were obtained for all women with ICP admitted to hospital between January 2014 to December 2015. Patients were divided into group A (no adverse fetal outcomes) and group B (adverse fetal outcomes). They were further divided into mild ICP and severe ICP on the basis of severity. The frequency of adverse fetal outcomes was assessed.

Results: Among 313 eligible women, 223 (71.2%) were mild ICP and 90 (28.8%) were severe ICP. By multivariate regression logistic analysis, Total Bile Acid (TBA) and twin pregnancy were the risk factors for adverse fetal outcomes among patients ($p=0.001$ and $p<0.001$, respectively). Receiver operating characteristic curve analysis revealed that the level TBA could be used as a predictor of adverse fetal outcomes with a 59.7% sensitivity and a 56.3% specificity when the cut-off value was 24.1 $\mu\text{mol/L}$ at the time of diagnosis of ICP.

Conclusion: Patients with severe ICP, twin pregnancy and high TBA level should be considered more intensive surveillance for possible adverse fetal outcomes.

Keywords: Intrahepatic cholestasis of pregnancy (ICP), Adverse fetal outcomes, Total bile acid (TBA), Risk factor.

Accepted on September 06, 2017

Introduction

Intrahepatic Cholestasis of Pregnancy (ICP) is a medical condition in which severe pruritus associates with elevated liver function tests, affecting 0.7%-5% of all pregnancies [1]. In Europe, the prevalence is 0.5% to 1.5%, and in China, the incidence is 2.3% to 6.0% [2,3]. Pruritus typically occurs in the late pregnancy and gets worse at night and predominantly affects the palms and soles. Skin changes are limited to excoriations due to scratching. Jaundice is not a common symptom in these patients. These symptoms and biochemical abnormalities are spontaneously relieved rapidly after delivery, but may recur in subsequent pregnancies [4]. The treatment of ICP is mainly symptomatic. Ursodeoxycholic acid is widely used and data suggests that treatment can reduce pruritus and lower TBA levels [5].

All the time, ICP is thought to be a relatively benign condition in pregnant women. However, a recent large Swedish study on more than 11,000 patients showed that the risk of later hepatobiliary cancer and immune-mediated and cardiovascular diseases is higher in women with ICP than in women without ICP [6]. Furthermore, ICP can lead to placental insufficiency like gestational diabetes, pre-eclampsia [7]. Most importantly, it is associated with potential adverse fetal outcomes, including premature delivery, stillbirth, neonatal death, intrauterine

growth restriction, Apgar score <7 at 5 min, meconium-stained amniotic fluid, neonatal unit admission [8,9]. The etiology and pathogenesis of ICP is complicated and remains unclear. Genetic, hormonal, and environmental factors presumably play important roles in this disease [4,10,11]. The mechanisms by which fetal complications occur are also unclear, and previous studies have not been consistent with predictors of adverse fetal outcomes. Therefore, this study investigated the associations between clinical factors and adverse fetal outcomes, to find the risk factors for adverse fetal outcomes.

Materials and Methods

The present retrospective cohort study was carried out in the First Affiliated Hospital of Anhui Medical University, China. The study was approved by the Ethics Committee of the Center due to the retrospective nature of the study. The informed consent was waived.

The data included 313 women with ICP who received obstetric care and delivered in this hospital from January 2014 to December 2015. Patients with a diagnosis of ICP were included development of persistent pruritus otherwise unexplained during the second or third trimester of pregnancy, fasting total bile acids (TBA) $\geq 10 \mu\text{mol/L}$ and/or abnormal liver function. While patients with viral or autoimmune

hepatitis or other possible cause of liver function impairment were excluded. Regular monitoring and treatment were performed from the time of diagnosis until delivery, all women received drug therapy.

The adverse fetal outcomes assessed were premature delivery (delivery gestational age < 37 weeks), stillbirth, neonatal death (0-27 d after delivery), intrauterine growth restriction (which was defined as birth weight below the 10th percentile for its gestation and gender following the hospital guidelines), Apgar score < 7 at 5 min, meconium-stained amniotic fluid and neonatal unit admission. Patients without these criteria were included in the A group and the others were included in the B group. According to the basis of TBA level, patients were further divided into mild ($10 \mu\text{mol/L} \leq \text{TBA} < 40 \mu\text{mol/L}$) and severe ($\text{TBA} \geq 40 \mu\text{mol/L}$). The prenatal outcomes and clinical records were measured at the time of diagnosis.

Statistical analysis

Statistical analysis was performed using SPSS17.0 software (SPSS, Chicago, IL). A two-tailed t-test and Chi-square test were used to compare the clinical characteristics between the groups. Independent risk factors for adverse fetal outcomes were analyzed and identified by univariate and multivariate

logistic regression analyses. Relative risk with the 95% confidence interval was also calculated. A p-value < 0.05 was considered statistically significant. Receiver operating characteristic (ROC) curve was used to determine the cut-off value of TBA for predicting AFOs.

Results

During this 2 y period, 313 patients were admitted for ICP which included 40 twins and 273 singletons. The incidence of ICP was 4.44% (313/7048), 223 (71.2%) were mild ICP and 90 (28.8%) severe ICP.

Patients in Group B gave birth significantly earlier than did those in Group A ($p < 0.001$). There were more multiparous and twin pregnancy in group B ($p = 0.001$ and $p < 0.001$, respectively). Compared with group A, the rate of caesarean section and the proportion of severe ICP were significantly increased in group B ($p = 0.003$ and $p = 0.004$, respectively). In terms of biochemical indexes, the levels of TBA, TBIL, CBIL were significantly higher in group B than A at the time of diagnosis ($p = 0.002$, $p = 0.025$ and $p < 0.011$, respectively). There were no statistically significant differences in other indexes between the two groups (Table 1).

Table 1. The demographic and biochemical characteristics between group A and group B.

	Group A (n=179)	Group B (n=134)	P
Maternal age (y, mean \pm SD)	28.8 \pm 5.3	28.5 \pm 4.8	0.581
Gestational week of delivery (weeks, mean \pm SD)	37.1 \pm 1.6	34.9 \pm 3.2	<0.001
Parity (n (%))			0.001
1	113 (63.8)	64 (36.2)	
>1	66 (48.5)	70 (51.5)	
Comorbidity			
GDM (n (%))	18 (10.1)	19 (14.2)	0.291
PIH (n (%))	17 (9.5)	21 (15.7)	0.098
Twin (n (%))	5 (2.8)	35 (26.1)	<0.001
Maternal complications			
PROM (n (%))	13 (7.3)	18 (13.4)	0.071
Postpartum hemorrhage (p25, p75)	360.0 (310.0, 440.0)	370.0 (290.0, 443.8)	0.842
Severity of ICP			0.004
Mild ICP (n (%))	143 (79.9)	80 (59.7)	
Severe ICP (n (%))	36 (20.1)	54 (40.3)	
Biochemical indexes			
TBA ($\mu\text{mol/L}$, median (p25, p75))	22.6 (15.9, 38.2)	30.6 (20.2, 80.0)	0.002
ALT (IU/L, median (p25, p75))	181.0 (77.0, 313.0)	181.5 (63.3, 346.0)	0.716
AST (IU/L, median (p25, p75))	127.0 (54.0, 235.0)	144.5 (46.8, 246.3)	0.73
TBIL ($\mu\text{mol/L}$, median (p25, p75))	13.0 (9.5, 18.0)	15.7 (10.1, 26.3)	0.025

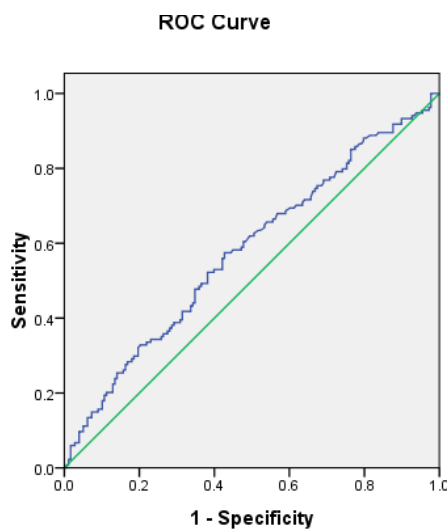
CBIL (µmol/L, median (p25, p75))	5.0 (3.0, 8.6)	7.0 (3.3, 13.9)	0.011
GGT (U/L, median (p25, p75))	42.0 (24.0, 73.0)	40.0 (23.8, 71.3)	0.716
Hb (g/dl, mean ± SD)	108.4 ± 12.2	109.5 ± 12.9	0.442
Mode of delivery			0.003
Vaginal delivery (n (%))	25 (58.3)	35 (41.7)	
Cesarean section (n (%))	154 (60.9)	99 (39.1)	

Abbreviations: GDM: Gestational Diabete Mellitus; PIH: Pregnancy Induced Hypertension; ICP: Intrahepatic Cholestasis of Pregnancy; TBA: Total Bile Acid; GGT: Gamma-Glutamyl Transpeptidase; AST: Aspartate Aminotransferase; ALT: Alanine Aminotransferase; TBIL: Total Bilirubin; CBIL: Conjugated Bilirubin; HB: Hemoglobin; PROM: Premature Rupture Of Membranes.

Table 2. Multivariate analysis of predictors of adverse fetal outcomes.

Variable	B	Wald χ^2	OR (95% CI)	P value	
Twin pregnancy	Yes	2.693	24.986	14.77 (5.14, 42.47)	<0.001
	No			1	
TBA levels	1.365	11.522	3.93 (1.78, 8.62)	0.001	

Abbreviations: CI: Confidence Interval; TBA: Terum Bile Acid.



Diagonal segments are produced by ties.

Figure 1. ROC analysis.

The significant variables (P<0.10) in the univariate analysis were included in the multivariate model. Multivariate logistic regression analysis showed independent risk factors of adverse fetal outcomes among patients with ICP were twin pregnancy (OR (95% CI)=14.774 (5.140, 42.469), p<0.001) and TBA levels (OR (95% CI)=1.781 (3.917, 8.615), p=0.001) (Table 2).

In Table 1, serum TBA level was significantly higher among ICP patients with AFO than among those without it (p=0.002). When using a Receiver Operating Characteristic (ROC) curve analysis, the level of TBA ≥ 24.1 mmol/L at the time of diagnosis of ICP and could be used as a predictor of adverse fetal outcomes with sensitivity and specificity was 59.7% and 56.3%, respectively (Figure 1).

Discussion

The associations between perinatal complications and ICP have been extensively studied. In our study, 4.44% of deliveries were among women with ICP. Previous research revealed that ICP frequently recurred in multiparous women and was common in multiple gestations [12-14]. In the present study, we also found that among women with ICP, especially those with adverse fetal outcomes were the twin and multiparous.

ICP is a pregnancy complication with a relatively mild maternal symptomatology, but it is associated with a high risk of adverse fetal adverse especially preterm birth, fetal hypoxia and stillbirth [15]. A recent retrospective study analyzed the outcome of 215 women with ICP that was classified as mild, moderate, and severe according to the bile acid level. Spontaneous preterm birth (19.0%) and perinatal death (9.5%) occurred significantly more often in cases with severe ICP [16]. Preterm delivery, including spontaneous and iatrogenic preterm deliveries, was the most common complication. A significant increase in the number of preterm delivery was detected in other study [17]. Our report hints that the gestational age of delivery was significantly earlier, especially in the group with adverse fetal outcomes and in the severe ICP group. In accordance with the literature, an increased rate of preterm delivery (33.9%, 106/313) was detected in our study.

Stillbirth is the most feared complication of ICP and the risk is difficult to estimate. A recent study confirmed the increased risk of stillbirth at least in severe ICP, defined as total bile acids>40 mmol/l, and also other fetal complications increased with increasing serum bile acid levels [17]. When we evaluated ICP according to stillbirth, it was relatively high at 15% in old studies and 3.5% in more recent studies [18]. Another study conducted by Turunen et al., stillbirth incidence was found to be 1.2%, in our study, 11 cases stillbirth are observed, the incidence is about 3.5% [19]. In the same study, ICP was deemed to increase the rates of induction of delivery and cesarean section, and in our study, the rate of cesarean section was 80.8%. When considering ICP is not a sign of cesarean section, we can further conclude that this increase is mainly due to repeated cesarean section.

The finding that patients with adverse fetal outcomes had higher TBA level than those controls indicated that the

increased TBA level observed in ICP correlates with poorer fetal outcomes. Many studies have confirmed a significant positive correlation between adverse fetal outcomes (including preterm delivery, meconium-stained amniotic fluid, and intrauterine fetal demise) and maternal total bile acid levels exceeding 40 mmol/L [17,20,21]. So, TBA levels not only are important biomarkers for the diagnosis of ICP, but also they are useful for the clinical grading of ICP [22].

The underlying mechanisms associated with adverse fetal outcomes in ICP are not well understood in detail. The placenta has an important role in protecting the foetus from potentially toxic endogenous substances such as TBA [23]. However, if the level of TBA in the maternal circulation increases, this enhances placental transport, promotes placental hormone production, and causes vasoconstriction of the chorion [24]. Therefore, high levels of total bile acids and their toxic metabolites are suspected to be associated with poor prognosis [20,25,26].

In this study, the TBA, TBIL and CBIL levels were significantly higher in patients as compared to those without adverse perinatal outcomes. We detected a significant positive correlation between TBA levels and adverse perinatal outcomes. Patients with ICP who had TBA levels ≥ 24.1 mmol/L at the time of diagnosis had a 3.93-fold increased risk of adverse perinatal outcomes. This cut-off value may provide increased awareness of patients at increased risk of adverse perinatal outcomes.

This present retrospective research has several limitations. First, the length of the study period may affect the outcomes, but the diagnosis of the year, including as a variable, in multivariate analysis to control the potential differences associated with this factor. Additionally, the number of patients was small, which could have been a confounding factor. However, these problems could be overcome in future multi-center studies.

Conclusion

Elevated TBA levels seem to be associated with adverse fetal outcomes in patients with ICP, particularly those with preterm delivery, stillbirth. It should be considered that patients who have elevated TBA levels ≥ 24.1 mmol/L at the time of diagnosis have a higher risk of adverse fetal outcomes described above. In addition, for patients with severe ICP and twin pregnancy, we should consider more intensive surveillance for possible adverse fetal outcomes.

Acknowledgment

The authors thank the patients who agreed to provide medical records for clinical research and statistics. We also thank the experts who provided statistical analysis aid and advice. Finally, we also appreciate all the colleagues who participated in the study.

Funding

The authors have no support or funding to report.

Competing Interests

The authors have declared that no competing interests exist.

References

1. Arthur KMC. Intrahepatic cholestasis of pregnancy: diagnosis and management; a survey of royal Australian and New Zealand college of obstetrics and gynaecology fellows. *Aust N Z J Obstet Gynaecol* 2014; 54: 263-267.
2. Frise CJ, Williamson C. Gastrointestinal and liver disease in pregnancy. *Clin Med* 2013; 13: 269-274.
3. Ovadia C, Williamson C. Intrahepatic cholestasis of pregnancy: recent advances. *Clin Dermatol* 2016; 34: 327-334.
4. Williamson C, Geenes V. Intrahepatic cholestasis of pregnancy. *Obstet Gynecol* 2014; 124: 120-133.
5. Joutsiniemi T, Timonen S, Leino R, Palo P, Ekblad U. Ursodeoxycholic acid in the treatment of intrahepatic cholestasis of pregnancy: a randomized controlled trial. *Arch Gynecol Obstet* 2014; 289: 541-547.
6. Wilkstromer Shemer EA, Stephansson O, Thuresson M. Intrahepatic cholestasis of pregnancy and cancer, immune-mediated and cardiovascular diseases: a population-based cohort study. *J Hepatol* 2015; 63: 456-461.
7. Martineau M, Raker C, Powrie R, Williamson C. Intrahepatic cholestasis of pregnancy is associated with an increased risk of gestational diabetes. *Eur J Obstet Gynecol Reprod Biol* 2014; 176: 80-85.
8. Azzaroli F, Turco L, Lisotti A, Calvanese C, Mazzella G. The pharmacological management of intrahepatic cholestasis of pregnancy. *Curr Clin Pharmacol* 2011; 6: 12-7.
9. Wikstrom Shemer E, Marschall HU, Ludvigsson JF, Stephansson O. Intrahepatic cholestasis of pregnancy and associated adverse pregnancy and fetal outcomes: a 12-year population based cohort study. *BJOG* 2013; 120: 717-723.
10. Dixon PH, Williamson C. The pathophysiology of intrahepatic cholestasis of pregnancy. *Clin Res Hepatol Gastroenterol* 2016; 40: 141-153.
11. Floreani A, Gervasi MT. New insights on intrahepatic cholestasis of pregnancy. *Clin Liver Dis* 2016; 20: 177-189.
12. Gonzales M, Reyes H, Arrese M. Intrahepatic cholestasis of pregnancy in twin pregnancies. *J Hepatol* 1989; 9: 84-90.
13. Rioseco A, Ivankovic M, Manzur A. Intrahepatic cholestasis of pregnancy: a retrospective case-control study of perinatal outcome. *Am J Obstet Gynecol* 1994; 170: 890-895.
14. Savander M, Ropponen A, Avela K. Genetic evidence of heterogeneity in intrahepatic cholestasis of pregnancy. *Gut* 2003; 52: 1025-1029.

15. Simjak P, Parizek A, Vitek L. Fetal complications due to intrahepatic cholestasis of pregnancy. *J Perinat Med* 2015; 43: 133-139.
16. Brouwers L, Koster MP, Page-Christiaens GC. Intrahepatic cholestasis of pregnancy: maternal and fetal outcomes associated with elevated bile acid levels. *Am J Obstet Gynecol* 2015; 212: 100.
17. Geenes V, Chappell LC, Seed PT. Association of severe intrahepatic cholestasis of pregnancy with adverse pregnancy outcomes: a prospective population-based case-control study. *Hepatology* 2014; 59: 1482-1491.
18. Geenes V, Williamson C. Intrahepatic cholestasis of pregnancy. *World J Gastroenterol* 2009; 15: 2049-2066.
19. Turunen K, Sumanen M, Haukilahti RL, Kirkinen P, Mattila K. Good pregnancy outcome despite intrahepatic cholestasis. *Scand J Prim Health Care* 2010; 28: 102-107.
20. Brites D. Intrahepatic cholestasis of pregnancy: changes in maternal-fetal bile acid balance and improvement by ursodeoxycholic acid. *Ann Hepatol* 2002; 1: 20-28.
21. Heikkinen J, Maentausta O, Ylostalo P, Janne O. Changes in serum bile acid concentrations during normal pregnancy, in patients with intrahepatic cholestasis of pregnancy and in pregnant women with itching. *Br J Obstet Gynaecol* 1981; 88: 240-245.
22. Chen J, Deng W, Wang J, Shao Y, Ou M, Ding M. Primary bile acids as potential biomarkers for the clinical grading of intrahepatic cholestasis of pregnancy. *Int J Gynecol Obstet* 2013; 122: 5-8.
23. Marin JJ, Macias RI, Serrano MA. The hepatobiliary-like excretory function of the placenta. A review. *Placenta* 2003; 24: 431-438.
24. Meng LJ, Reyes H, Palma J, Hernandez I, Ribalta J, Sjövall J. Effects of ursodeoxycholic acid on conjugated bile acids and progesterone metabolites in serum and urine of patients with intrahepatic cholestasis of pregnancy. *J Hepatol* 1997; 27: 1029-1040.
25. Lee RH, Incerpi MH, Miller DA, Pathak B, Goodwin TM. Sudden fetal death in intrahepatic cholestasis of pregnancy. *Obstet Gynecol* 2009; 113: 528-531.
26. Pathak B, Sheibani L, Lee RH. Cholestasis of pregnancy. *Obstet Gynecol Clin North Am* 2010; 37: 269-282.

***Correspondence to**

Lin Cong

Department of Obstetrics and Gynecology

The First Affiliated Hospital of Anhui Medical University

PR China