

Performance evaluation and comparative analysis of various machine learning techniques for diagnosis of breast cancer.

Kanchanamani M*, Varalakshmi Perumal

Karpaga Vinayaga College of Engineering and Technology, Kanchipuram, Tamil Nadu, India

Abstract

Breast cancer is heterogeneous and life threatening diseases among women in world wide. The aim of this paper is to analyze and investigate a novel approach based on NSST (Shearlet transform) to diagnosis the digital mammogram images. Shearlet Transform is a multidimensional version of the composite dilation wavelet transform, and is especially designed to address anisotropic and directional information at various scales. Initially, using multi scale directional representation, mammogram images are decomposed into different resolution levels with various directions from 2 to 32. In this work we investigated five machine learning algorithm, namely SVM (Support Vector Machine), Naïve Bayes, KNN LDA and MLP, which are used to categorizes decomposed image as either cancerous (abnormal) or not (normal) and then again abnormal severity is further categorized as either benign images or malignant images. The evaluation of the system is carried out on the MIAS (Mammography Image Analysis Society) database. The tenfold cross-validation test is applied to validate the developed system. The performance of the five algorithms was compared to find the most suitable classifier. At the end of the study, obtained results shows that SVM is an efficient technique compares to other methods.

Keywords: Breast cancer, Benign, Malignant, Statistical features, Shearlet transform, Support vector machine, Naïve Bayes , KNN, LDA, MLP.

Accepted on February 17, 2016

Introduction

From detailed study of Globocon data, we have acquired the correlation of breast malignancy among India with US, which will concludes that the prevalence of tumor is of about 1 in 30. However, the actual number of cases reported in 2008 were comparable; about 1, 82, 000 breast cancer cases in the US and 1, 15, 000 in India. According to the guesstimation of new global study it has guesstimates that the number of new cases of breast malignancy in India is of about 2030, will gradually raises from the present 115,000 to all over 200,000 per year.

From the statistics report of International Agency for ground work on tumor (Globocon data), India ranks in the top of the table depicts that 1.85 million of years of healthful life has been lost due to breast tumor. Moreover, the modernistic summarization in UK determined that breast cancer is not only a cause of young women, but it also a problem of old age women those who have reached the age of about sixty or even seventy. Discrete Shearlet Transform based system is approached [1] for Microcalcification classification. The Energy of the sub band is used as a feature and nearest neighbor classifier used for the classification. The K-Nearest Neighbor (KNN) classifier is used in the classification stage. A microcalcification image in the Mammography Image Analysis Society (MIAS) database [2] is taken for evaluation.

The overview of most related and recent method for the development of CAD system [3] is described. The wavelet based model constructed in [4] and 217 mammograms images from mini MIAS is considered for testing purpose. KNN is used for classification and the results were compared with SVM. The Receiver Operating Characteristic (ROC) curve analysis is used as the performance measure. Discrete Shearlet Transform based system is implemented [5] for texture classification. Shearlet s band signature, entropy is used as a feature and nearest neighbor classifier used for the classification. The performance of the work is analyzed using Brodatz texture database.

A CAD method is suggested in [6] for early detection of masse tumor in breast images with the help of the size and shape. Discrete Shearlet Transform based mass classification is discussed in [7]. The GLCM feature energy is extracted from the decomposed images and KNN is used classification purpose. A CAD system illustrated in [8] which extracts first-order statistics features using Histogram-based approach. DDSM database image is used for evaluation. Noise from the images is removed using morphological techniques called opening-by-reconstruction and closing-by-reconstruction and then images are segmented using Otsu method.

A CAD system using Shearlet transform is adopted in [8] for classification of breast tumors in ultrasound images. The

AdaBoost algorithm is used as classifier and the outputs were compared with wavelet and GLCM based methods. Homomorphic Filtering [9] is used to enhance the images and with the help Shearlet transform, ROI image is decomposed and features are extracted. SVM is used as classifier to categorize the mass images. The performance metrics Sensitivity, specificity and accuracy are calculated. The research paper is arranged as follows: Section 2 introduces the methodology used in the system; Shearlet Transform and Support Vector Machine in a concise manner. Section 3 describes the experimental results. Section 4 includes the conclusion.

Materials and Methods

The proposed system for the classification of breast cancer is built using Shearlet Transform and various classifiers. This section describes the theoretical information about Shearlet Transform, SVM, NB, MLP, KNN and LDA.

Shearlet transform

Shearlet transform is a new concept equipped with a rich mathematical structure, and can capture the information in any direction. The Shearlet transform has the following main properties: well localizing, parabolic scaling, and highly directional sensitivity, spatially localizing and optimally sparse.

The Shearlet representation forms a tight frame which decomposes a function into scales and directions, and is optimally sparse [10-13] in representing images with edges. The continuous Shearlet transform for an image f is defined as the mapping

$$f \rightarrow SH\psi f(a, s, t) = (f, \psi_{a,s,t}) \quad (1)$$

where ψ is a generating function, $a > 0$ is the scale parameter, $S \in R$ is the shear parameter,

$t \in R^2$ is the translation parameter, and the analyzing elements $\psi_{a,s,t}$ (Shearlet basis functions) are given by

$$\psi_{a,s,t}(x) = |\det M_{a,s}|^{-\frac{1}{2}} \psi(M_{a,s}^{-1}(x - t)) \quad (2)$$

Where $M_{a,s} = \begin{pmatrix} a & s\sqrt{a} \\ 0 & \sqrt{a} \end{pmatrix}$

Each element $\psi_{a,s,t}$ has frequency support on a pair of trapezoids at several scales, symmetric with respect to the origin, and oriented along a line of slope s . The Shearlet $\psi_{a,s,t}$ form a collection of well-localized waveforms at various scales a , orientations s and locations t . Image decomposition using Shearlet transform is done two stages namely, decomposition of multi-direction and multi-scale.

1. Multi-direction decomposition of image using shear matrix S_0 or S_1 .
2. Multi-scale decompose of each direction using wavelet packets decomposition.

In step (1), if the image is decomposed only by S_0 , or by S_1 , the number of the directions is $2(l+1)+1$. If the image is decomposed both by S_0 and S_1 , the number of the directions is $2(l+2)+2$. The Image decomposition using Shearlet transform is shown in figure 1 and feature extraction using Shearlet transform [14] is shown in figure 2.

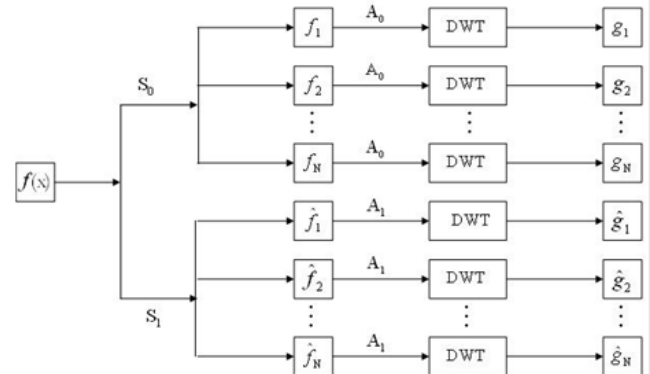


Figure 1. Image decomposition using Shearlet transform.

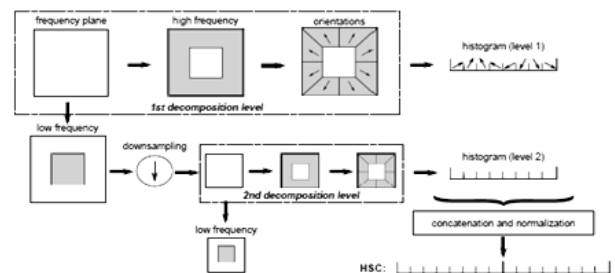


Figure 2. Feature extraction for two levels Shearlet decomposition with eight directions.

SVM classifier

Support vector machine, SVM [15] is a powerful, robust and sophisticated supervised machine learning approach. It is based on the statistical learning theory. It was firstly proposed by Cortes and Vapnik from his original work on structural risk minimization and then modified by Vapnik. Figures 3 and 4 give the basic principles of SVM. When the data is not linearly separable, the algorithm works by mapping the input space to higher dimensional feature space, through some nonlinear mapping chosen a priori (Figure 1), and constructs a hyper plane, which splits class members from non-members (Figure 2).

SVM introduces the concept of ‘margin’ on either side of a hyper plane that separates the two classes. Maximizing the margins and thus creating the largest possible distance between the separating hyper plane and the samples on either side, is proven to reduce an upper bound on the expected generalization error.

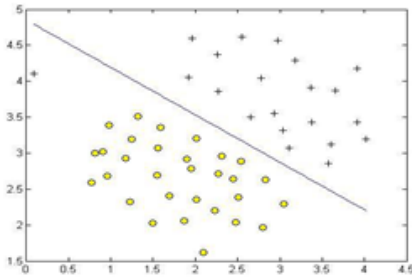


Figure 3. Linear SVM hyper plane construction.

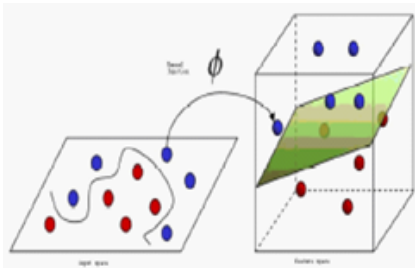


Figure 4. SVM topology in hyperspace.

Naïve bayes classifier

It is one of the frequently used methods for supervised learning. The Naive Bayes is a quick method for creation of statistical predictive models. NB is based on the Bayesian theorem. This classification technique analyses the relationship between each attribute and the class for each instance to derive a conditional probability for the relationships between the attribute values and the class. During training, the probability of each class is computed by counting how many times it occurs in the training dataset.

Multilayer perception classifier

MLP is a feed forward neural network trained using the back propagation algorithm. MLP networks consist of three layers: an input layer, hidden layer is one or more and an output layer. Figure 5 shows MLP feed forward Neural Network.

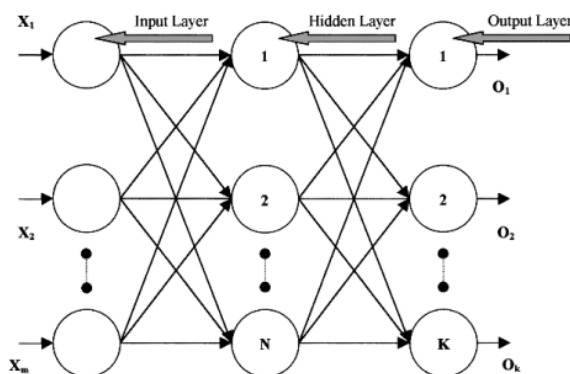


Figure 5. MLP feed forward neural network.

KNN classifier

KNN is a method for classifying objects based on closest training examples in the feature space. In KNN, an object is classified by a majority vote of its neighbors, with the object being assigned to the class most common amongst its k nearest neighbors. The nearest neighbor classifier is designed to classify the images. The classification is done by using minimum distance measure. Let us consider a=(x1, y1) and b=(x2, y2) are two points. The Euclidean distance between these two points is given by

$$D(a, b) = \sqrt{(x_1 - x_2)^2 + (y_1 - y_2)^2}$$

Linear discriminant analysis classifier

Linear Discriminant Analysis is a one of the Supervised Learning algorithms, which constructs one or more discriminant equations Di (linear combinations of the predictor variables Xk) such that the different groups differ as much as possible on D. It predicts the class of an observation X by the class whose mean vector is closest to X in terms of the discriminant variables. Discriminant function is defined as

$$D_i = b_0 + \sum_{k=1}^p b_k X_k$$

Results

MIAS datasets

In this study, Mammographic Image Analysis Society (MIAS) database [2], a benchmark dataset used by most of the researchers is considered for system evaluation. The distribution of different cases available in MIAS database is shown in table 1. There are totally 322 mammogram images of left and right breast acquired from 161 patients.

Table 1. MIAS database images.

Cases	Total images	Benign	Malignant
Normal	207	-	-
Micro calcification	25	12	13
Circumscribed masses	23	19	4
Speculated masses	19	11	8
Ill-defined masses	14	7	7
Architectural distortion	19	9	10
Asymmetry lesion	15	6	9
Total	322	64	51

All the 64 benign images and 51 malignant images, totally 115 abnormal images are considered for this study irrespective of the type of abnormalities. From the database, 70 normal images are randomly chosen and considered for performance evaluation.

Feature extraction stage

The original mammograms in MIAS are very big size (1024 × 1024 pixels) and almost 50% of the whole image comprised of the background with a lot of noise. Preprocessing is an important issue in low level image processing. Preprocessing [16] stage is required to remove the areas that are not related to the detection region (pectoral muscle and any artifact labels that can be applied on mammogram). Therefore cropping process was performed manually to eliminate the noise and background information and Regions of Interest (ROI) image of size 256 × 256 is cropped from the original image. Figure 6a shows the original mammogram Benign image Mbd005 and Figure 6b shows the corresponding ROI Benign image. Figure 8a shows the original mammogram Malignant Image Mbd271 and Figure 8b shows the corresponding ROI Malignant image.

After cropping, Shearlet transform is applied on ROI to decompose the images and then first order statistical features,

spatial gray level dependant feature and second order statistical features, totally 21 features have been extracted from the decomposed image. From 21 features [17], 4 features namely Variance, Standard Deviation, Skewness and Kurtosis are selected and used for evaluation purpose. The decomposition level from 2 to 4 with various directions from 2 to 32 is used in this study and the ROI images are transformed into the aforementioned levels and directions. Figures 7 and 9 shows the resultant decomposed ROI images of Benign and Malignant respectively for 2 levels and 2 directions. Figure 10 shows the functional block diagram of the developed diagnosis scheme. The number of sub band is calculated by using the formula.

No.of Sub band=No.of Levels × No.of Directions +1;

Table 2. Extracted features for diagnosis.

S.No	Feature	Expression
1	Mean (or) First Movement	$\bar{\mu}_s = \frac{1}{RC} \sum_{i=1}^R \sum_{j=1}^C I_s(i, j)$
2	Variance (or) Second Movement	$\sigma_s = \frac{1}{RC} \sum_{i=1}^R \sum_{j=1}^C (I_s(i, j) - \bar{\mu}_s)^2$
3	Skewness (or) Third Movement	$\gamma_s = \frac{1}{RC} \sum_{i=1}^R \sum_{j=1}^C \left[\frac{I_s(i, j) - \bar{\mu}_s}{\sigma_s} \right]^3$
4	Kurtosis (or) Fourth Movement	$k_s = \frac{1}{RC} \sum_{i=1}^R \sum_{j=1}^C \left[\frac{I_s(i, j) - \bar{\mu}_s}{\sigma_s} \right]^4 - 3$
5	Contrast	$\sum_{i=0}^{G-1} \sum_{j=0}^{G-1} M_{i,j}^d (i - j)^2$
6	Correlation	$\sum_{i=0}^{G-1} \sum_{j=0}^{G-1} M_{i,j}^d \left[\frac{(i - \mu_i^d)(j - \mu_j^d)}{\sigma_i^d \sigma_j^d} \right]$
7	Energy	$\sum_{i=0}^{G-1} \sum_{j=0}^{G-1} (M_{i,j}^d)^2$
8	Homogeneity	$\sum_{i=0}^{G-1} \sum_{j=0}^{G-1} \left[\frac{M_{i,j}^d}{1 + (i - j)^2} \right]$
9	Entropy	$- \sum_{i=0}^{G-1} \sum_{j=0}^{G-1} P(i, j) \times \log(P(i, j))$

10	Sum of Squares	$\sum_{i=0}^{G-1} \sum_{j=0}^{G-1} (i - \mu)^2 P(i, j)$
11	Sum Average	$\frac{1}{2} \sum_{i=0}^{G-1} \sum_{j=0}^{G-1} M_{i,j}^d (i + j)$
12	Sum Entropy	$- \sum_{i=0}^{2G-2} P_{x+y}(i) \log(P_{x+y}(i))$
13	Difference Entropy	$- \sum_{i=0}^{G-1} P_{x+y}(i) \log(P_{x+y}(i))$
14	Cluster Prominence	$\sum_{i=0}^{G-1} \sum_{j=0}^{G-1} \{i + j - \mu_x - \mu_y\}^4 \times P(i, j)$
15	Sum Variance	$\sum_{i=0}^{2(N_g-1)} (i - f_7)^2 p_{x+y}(i)$
16	Difference Variance	$\sum_{i=0}^{N_g-1} (i - f'_{10})^2 p_{x-y}(i)$
17	Maximum Probability	$\max_{i,j} M_{i,j}^d$
18	Mean Absolute Difference	$\frac{1}{L/2} \sum_{d=1}^{L/2} \ x_n^d - x_{n+d}\ $
19	Information measure of Correlation 1	$\frac{HXY - HXY_1}{\max(HX, HY)}$
20	Information measure of Correlation 2	$(1 - \exp[-2(HXY_2 - HXY)])^{1/2}$
21	Standard Deviation	$\sqrt{\frac{\sum_{x=1}^M \sum_{y=1}^N (I_i(x, y) - \mu)^2}{M \times N}}$

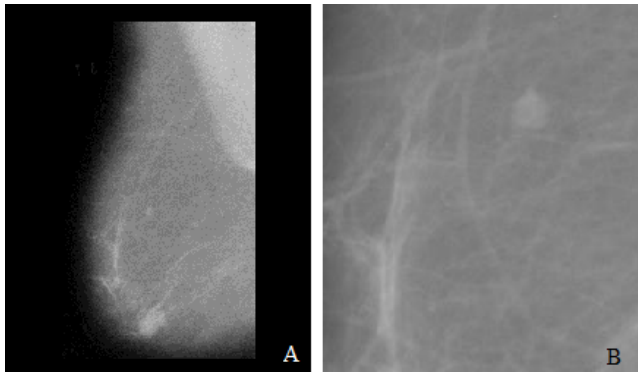


Figure 6. A-Original benign image Mbd005 (1024 x1024); b-ROI benign image Mbd005 (256 x 256).

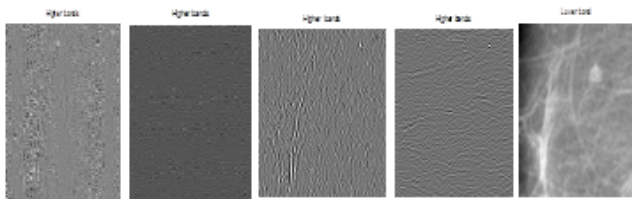


Figure 7. Decomposed resultant 5 (4 higher and 1 lower) sub band of ROI Benign Image Mbd005 (256 x 256).

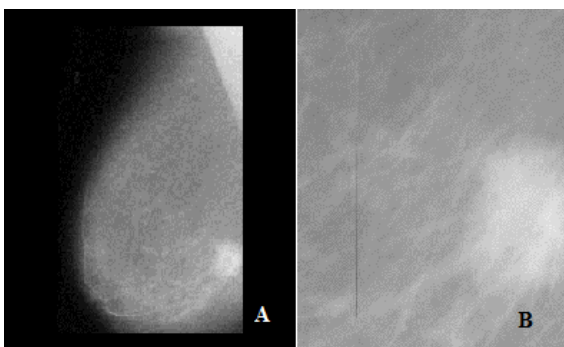


Figure 8. A-Original Malignant Image Mbd271 (1024 x1024); B-ROI Malignant Image Mbd271 (256 x 256).

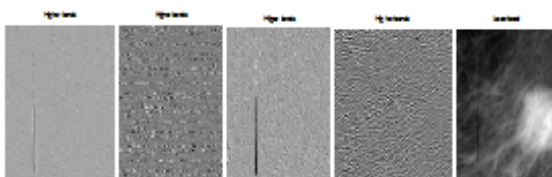


Figure 9. Decomposed resultant 5 (4 higher and 1 lower) sub band of ROI Malignant Image Mbd271 (256 x 256).

Classification stage

In the classification phase, two problems are considered. In first phase the classifiers namely SVM, NB, MLP, KNN, and LDA are trained separately by using normal and abnormal Shearlet moments and in the second phase also the classifiers namely SVM, NB, MLP, KNN, and LDA classifier are trained separately by using benign and malignant Shearlet moments of training mammogram images.

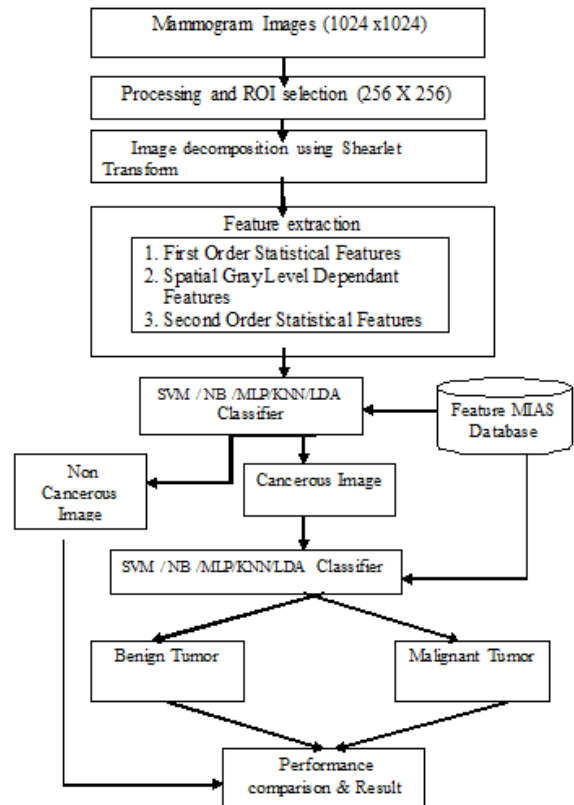


Figure 10. Functional Block Diagram of Proposed diagnosis Scheme.

Performance measures

The efficiency of the developed model is evaluated using performance metrics such as TP, FP, TN, FN Sensitivity, specificity, precision, F-measure, error rate and classification accuracy. These performance metrics are evaluated using the confusion matrix. A confusion matrix outputs a number of correctly and incorrectly classified images by an analyzed scheme, which is shown in table 3.

Table 3. Confusion matrix.

Actual State	Predicted State	
	Classified as True	Classified as False
Class is True	TP	FN
Class is False	FP	TN

True Positive (TP)-number of Normal image is correctly classified
 True Negative (TN)-number of Abnormal image is correctly classified
 False Positive (FP)-number of Normal image is wrongly classified as Abnormal images
 False Negative (FN)-number of Abnormal image is wrongly classified as Normal images
 Sensitivity or Recall or True Positive Rate = TP / (TP+FN)

Classification Accuracy=(TP+TN)/(TP+FP+TN+FN)

Precision=TP/(TP+FP), False Positive Rate=FP/(FP+TN)

Specificity=TN/(TN+FP) or (1- False Positive Rate)

Table 4. Classification Accuracy rate of the various Classifiers for Normal/Abnormal case.

	SVM	NB	MLP	KNN	LDA
Correctly Classified Images	166	124	124	140	140
Incorrectly Classified Images	24	66	66	50	50
Classification Accuracy (%)	87.3	65.2	65.2	73.6	73.6

F-measure=2*Recall*Precision /Recall+Precision

Error Rate=(FP+FN)/(TP+FP+TN+FN)

Table 6. Performance Comparison of various Machine Learning Algorithms for Normal / Abnormal case.

Classifiers/Observation	TP	FP	TN	FN	Recall Sensitivity or True Positive Rate (TPR)	Specificity	Precision	False Positive Rate (FPR)	F-score or F-measure	Matthews
SVM	46	24	120	0	1	0.833	0.657	0.167	0.793	0.917
NB	30	50	94	16	0.652	0.653	0.375	0.347	0.476	0.653
MLP	23	43	101	23	0.5	0.702	0.349	0.298	0.41	0.601
KNN	28	32	112	18	0.6	0.772	0.46	0.228	0.524	0.692
LDA	28	32	112	18	0.6	0.772	0.46	0.228	0.524	0.692

Table 7. Performance Comparison of various Machine Learning Algorithms for Benign / Malignant case.

Classifiers Observation	TP	FP	TN	FN	Recall Sensitivity or True Value	Specificity	Precision	False Positive Value	F-score or F-measure	Matthews
SVM	58	2	53	07	0.892	0.964	0.967	0.036	0.928	0.928
NB	50	35	20	15	0.769	0.363	0.588	0.636	0.667	0.566
MLP	29	26	29	36	0.446	0.527	0.527	0.473	0.483	0.487
KNN	41	30	25	24	0.632	0.453	0.572	0.543	0.600	0.544
LDA	38	22	33	27	0.584	0.600	0.633	0.400	0.600	0.593

Table 8. Comparison of error rate of various Classifiers.

Error Rate	SVM	NB	MLP	KNN	LDA
Error Rate for Normal/ Abnormal Images	0.12	0.34	0.34	0.26	0.26
Error Rate for Benign/ Malignant Images	0.07	0.41	0.51	0.45	0.41

Table 6 and Table 7 exhibit the performance metrics comparison of several of the classifier used in this developed model for normal/abnormal cases and benign/malignant cases respectively. Table 8 shows the error rate of the various classifiers of this approach.

Table 5. Classification Accuracy rate of the various Classifiers for Benign / Malignant case.

	SVM	NB	MLP	KNN	LDA
Correctly Classified Images	111	70	58	66	71
Incorrectly Classified Images	9	50	62	54	49
Classification Accuracy (%)	92.5	58.3	48.3	55.0	59.1

Table 4 and Table 5 display accuracy of several of the classifier used in this developed model for normal/abnormal cases and benign/malignant cases respectively.

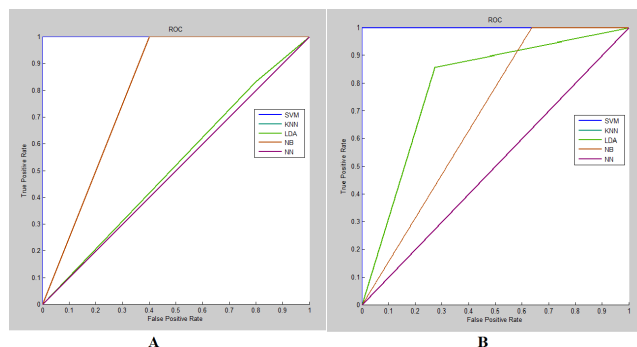


Figure 11. A-benign / malignant; B-normal / abnormal.

The ROC (receiver operating characteristic) plots of various classifier for benign/malignant cases is illustrated in figure 11a and normal/abnormal cases is explained in figure 11b. Table 9 exhibits the comparison of the proposed work with the already existing systems. Table 9 describes the comparison of the proposed method with other existing approaches for computer aided diagnosis.

Table 9. Comparison of proposed system with other existing methods.

Authors & Year	Features Extracted	Classifier Used	Classification Accuracy Obtained (%)
W. Borges Sampaio, et al. [18]	Shape, texture using geostatic function	SVM	80.0
Wang et al. [19]	Curvilinear, Multi-resolution features	GLCM, Gabor, statistical structure d SVM	91.4
Y.Ireaneus Anna Rejani, et al. [15]	Shape Feature based	DWT SVM Classifier	88.75
Moayed F et al 2010 [20]	Contourlet Features	SVM	82.1
Ioan B. et al. 2011 [21]	Gabor wavelets and directional features	SVM	84.37
Proposed Method	Shearlet Moments, statistical features	GLCM, SVM	Normal/Abnormal: 87.3 Benign / Malignant :92.5

Discussion

In this research paper we addressed several machine learning techniques to find a best breast cancer diagnosis model and classification accuracies were compared. The proposed approach is focused on classification of mammogram images as either normal or abnormal (benign or malignant) using various classifiers. The experiments were conducted with MIAS database images. From the results, it is came known that a better classification accuracy 87.3, achieved at level 4 with direction 8 for normal and abnormal classification using SVM classifier and the better classification accuracy 92.5 is achieved at level 3 with direction 8 to distinguish between benign and malignant using SVM classifier [22].

Conclusion

From the experiments analysis, it can be inferred that SVM classifier yields better classification accuracy in both cases when compared with other classifiers results. It is also observed that the classification accuracy of the KNN and LDA are same for normal/abnormal cases and more over it is clear that the classification accuracy of MLP and NB classifiers are same for normal/abnormal cases. Hence this manuscript concludes that SVM classifier is identified as the best method for breast cancer diagnosis compare to other classifiers used in this approach.

References

1. Ali AJ, Janet J. Discrete Shearlet Transform Based Classification of Microcalcification in Digital Mammograms. *J Comp Appl* 2013; 6: 1-3.
2. <http://peipa.essex.ac.uk/pix/mias/>
3. Rangayyan RM, Xu J, Elnaqa I, Yang Y. Computer aided detection and diagnosis of breast cancer with mammography recent advances. *IEEE Trans Inf Technol Biomed* 2009; 13: 236-251.
4. Prathibha BN, Sadasivam V. Multi Resolution Texture Analysis of Mammograms Using Nearest Neighbor Classification Techniques. *Int J Info Acqui* 2010; 7: 109-118.
5. Vivek C, Audithan S. Texture classification by Shearlet band signatures. *Asian J Sci Res* 2014; 7: 94-99.
6. Charan BP, Sinha GR. Abnormality Detection and Classification in Computer-Aided Diagnosis (CAD) of Breast Cancer Images. *J Med Imaging Health Informa* 2014; 4: 881-885.
7. Ali A, Janet JJ. Mass Classification in Digital Mammograms Based on Discrete Shearlet Transform. *J Comput Sci* 2013; 9: 726-732.
8. El Abbadi NK, Elaf A, Al Tae J, Breast Cancer Diagnosis by CAD. *Int J Comput Appl* 2014; 100: 975-8887.
9. Anusha DS. A Hybrid Scheme for Mass Detection and Classification in Mammogram. *Int J Eng Sci Res Tech* 2014; 3: 1591-1593.
10. Easley G, Demetrio L, Wang-Q L. Sparse directional image representations using the discrete Shearlet transform. *Appl Comput Harmon Anal* 2008; 25: 25-46.
11. Guo K, Labate D. Optimally Sparse Multidimensional Representation Using Shearlets. *SIAM J Math Anal* 2007; 39: 298-318.
12. Guo K, Labate D. Characterization and Analysis of Edges Using the Continuous Shearlet Transform. *SIAM J Imaging Sci* 2009; 2; 959-986.
13. Lim WQ. The discrete Shearlet transform : a new directional transform and compactly supported Shearlet frame. *IEEE Trans Image Process* 2010; 19: 1166-1180.
14. Schwartz WR, da Silva RD, Davi LS, Pedrini H. A Novel Feature Descriptor Based on the Shearlet Transform. 2011 18th IEEE International Conference on Image Processing, Brussels, 1033-1036.
15. Rejani YIA, Selvi ST. Early Detection of Breast Cancer using SVM Classifier Technique. *Int J Comput Sci Eng* 2009; 1: 127-130.
16. Ponraj MN, Jenifer ME, Poongodi P, Manoharan JS. A Survey on the Preprocessing Techniques of Mammogram for the Detection of Breast Cancer. *J Emerg Trends Comput Informa Sci* 2011; 2: 656-664.
17. <http://www.uio.no/studier/emner/matnat/ifi/INF4300/h08/undervisningsmateriale/g lcm.pdf>
18. Sampaio WB, Diniz EM, Silva AC, de Paiva AC, Gattass M. Detection of masses in mammogram images using

- CNN, geostatistic functions and SVM. *Comput Biol Med* 2011; 41: 653-664.
19. Wang D, Shi L, Ann Heng P, Automatic detection of breast cancers in mammograms using structured support vector machines, *Neurocomputing*2009; 72: 3296-3302.
20. Moayedi F, Azimifar Z, Boostani R, Katebi S. Contourlet-based mammography mass classification using the SVM family. *Comput Biol Med* 2010; 40: 373-383.
21. Ioan B, Gacsadi A. Directional features for automatic tumor classification of mammogram images. *Biomed Signal Process Control* 2011; 6: 370-378.
22. Huang L, Shi J, Wang R, Zhou S. Shearlet-Based Ultrasound Texture Features for Classification of Breast Tumor. 2013 Seventh International Conference on Internet Computing for Engineering and Science, Shanghai, 116-121.

***Correspondence to:**

Kanchanamani M

Karpaga Vinayaga College of Engineering and Technology
India