

## Hypopituitarism association with blindness in a 5-year-old boy: A case report and literature review

Njood Waleed Nazer<sup>1</sup>, Abdulmoein Eid Al-Agha<sup>2</sup>

<sup>1</sup>Faculty of Medicine, King Abdulaziz University, Jeddah, Saudi Arabia.

<sup>2</sup>Pediatric Department, King Abdulaziz University Hospital, Jeddah, Saudi Arabia.

### Abstract

Many diseases are classified based on their clinical manifestations. This case report describes a patient with hypopituitarism and congenital blindness. Further assessment confirmed a diagnosis of septo-optic dysplasia. Optic nerve hypoplasia is a leading cause of congenital blindness. The triad of i) pituitary insufficiency, ii) optic nerve hypoplasia, and iii) brain midline defects defines septo-optic dysplasia. Three classifications of the disorder are recognized and are discussed here.

**Keywords:** Hypopituitarism, Blindness, Optic nerve hypoplasia, Brain midline, Septo-optic dysplasia.

Accepted March 31<sup>st</sup>, 2018

### Introduction

Hypopituitarism is defined as a decline in pituitary gland function [1]. The decreased action of the pituitary gland was formerly known as Simmonds' disease [1]. It is a disorder of endocrine origin with multiple causes [2], which can be congenital or acquired [1]. Childhood blindness is a dominant concern and has reached 1.26 million children [3,4]. In children, blindness can be prevented in 30-72% of cases [4]. Intrauterine infection, teratogens, poor nutrition, neoplasm, and premature birth contribute to early-age blindness [5]. Optic nerve hypoplasia has been known to largely contribute to childhood blindness [6]. In 1965, the association between optic nerve hypoplasia and the absence of the septum pellucidum was identified, and came to be known as septo-optic dysplasia (SOD) [7]. Later, the association between the clinical pictures of pituitary dysfunction was added to SOD [6]. SOD is heterogeneous, with an incidence of 1 in 10,000 live births, with equal prevalence in male and female infants [7]. Gene mutation in *HESX1*, *SOX2*, and *SOX3* is thought to play a role in familial cases of SOD [7]. Incomplete development of the optic nerve, loss of pituitary gland function, and brain midline abnormalities form the picture of typical SOD [7].

In this case report, we present a case of hypopituitarism associated with blindness since birth.

### Case Description

A 5 year old male with known congenital blindness, presented to the endocrine clinic with short stature. Perinatal history revealed a 38 week gestation, birth-

weight of 3 kg, elective cesarean section, no history suggestive of birth asphyxia, and born to a 32 year old mother with no complications during pregnancy. No history of infections, maternal nutritional deficiency or teratogenic drug administration was noted. There was no history of neonatal hypoglycemia or micropenis was found. Similar history of congenital blindness was noted in the elder sister (Figure 1). In regard to his short stature, there were no other associated symptoms observed. There was no history of trauma, headache, convulsions, delayed cognitive development, polyuria, cold intolerance, weight gain, facial puffiness or muscle aches. The patient had normal intellectual ability and good academic performance. History of short stature in the father was reported. The

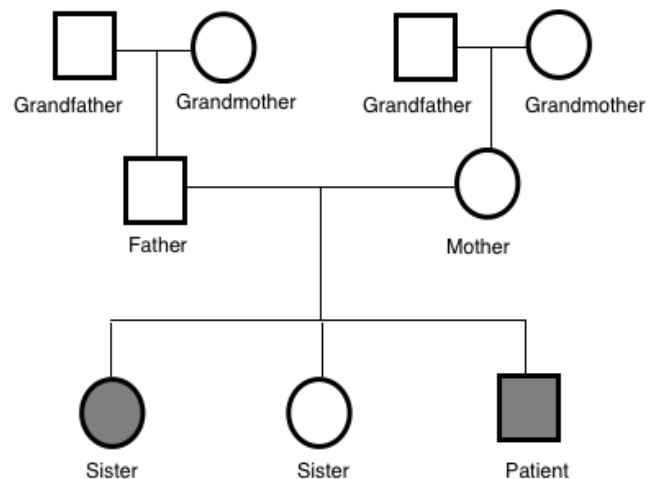


Figure 1. Congenital blindness in the family

father's height was 162 cm and the mother's height was 160 cm, with mid-parental height potential of 167.5 cm. There was no relevant medication history.

On examination, the child was cooperative with normal vital signs and had no signs of developmental delay. His height was 95 cm, below 5<sup>th</sup> percentile, and his weight was 13 kg, below 5<sup>th</sup> percentile. Other than the ophthalmological findings, physical examination was normal. Ophthalmological examination revealed an absent red reflex in both eyes, with visual acuity of no light perception, indicating blindness. Slit lamp examination revealed corneal scarring with lens opacity and no retinal view in the right eye. The left eye showed conjunctivalization of the cornea. Bilateral microphthalmia with nystagmus and pallor of the optic discs was noted.

A clonidine and glucagon growth hormone stimulation test (Table 1) confirmed the diagnosis of growth hormone deficiency, with a maximum peak level with stimulation of 2.39 ng/ml; a normal growth hormone peak level should be greater than 10 ng/mL. Other tests (Table 2) revealed central hypothyroidism with no other pituitary dysfunction. Other laboratory investigations were normal, with no electrolyte disturbance. A hand radiograph is shown in Figure 2. Magnetic Resonance Imaging (MRI) (Figures 3-5) revealed that the patient had abnormal pituitary size, smaller right eye globe compared to the left and bilateral optic nerve hypoplasia.

**Table 1.** Results of growth hormone stimulation test over 180 min

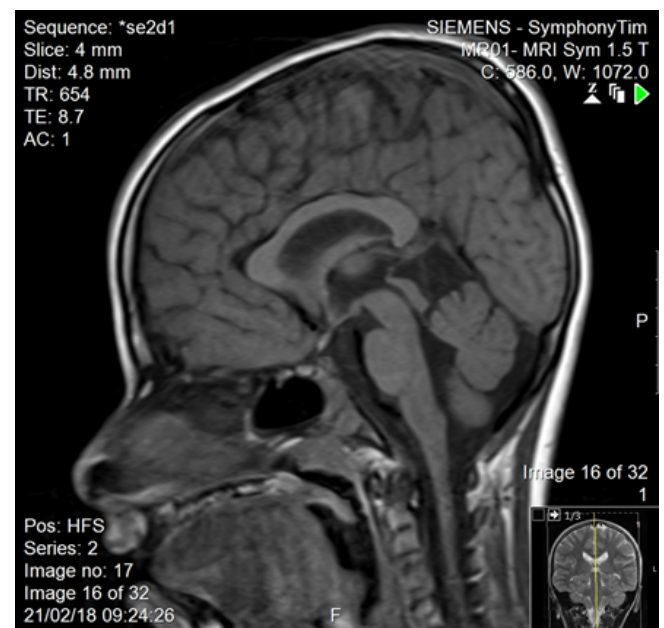
Test	Results
Growth Hormone (30 min)	0.158 ng/ml
Growth Hormone (60 min)	0.122 ng/ml
Growth Hormone (90 min)	2.08 ng/ml
Growth Hormone (120 min)	2.39 ng/ml
Growth Hormone (150 min)	1.59 ng/ml
Growth Hormone (180 min)	1.27 ng/ml

**Table 2.** Other pituitary function test and electrolytes

Test	Results	Normal Range
TSH (Thyroid Stimulating Hormone)	1.35 µIU/l	0.27-4.2 µIU/l
FT4 (Free T4 Hormone)	11.4 pmol/l	12-22 pmol/l
ACTH	4.57 pmol/l	1.6-13.9 pmol/l
Cortisol	207.37 nmol/l	150-368 nmol/l
IGF-1	31.6 ng/ml	50-350 ng/ml
Prolactin	279 mIU/l	277-365 mIU/l
Testosterone	7.3 nmol/l	2.0-8.4 nmol/l
LH	0.9 mIU/l	0-0.9 mIU/l
FSH	4.4 IU/l	0.5-6.3 IU/l
Sodium	139 mmol/l	136-145 mmol/l
Potassium	3.6 mmol/l	3.5-5.1 mmol/l
Chloride	102 mmol/l	98-107 mmol/l



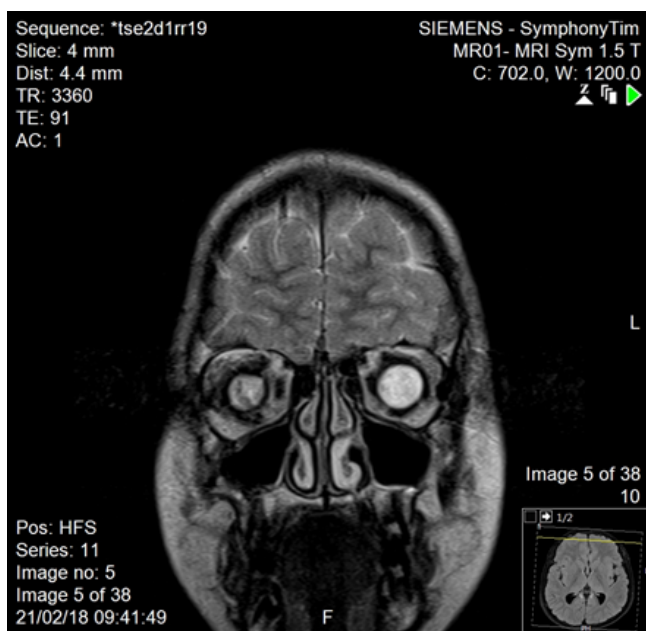
**Figure 2.** Hand X-ray revealed normal bone age of 5 years



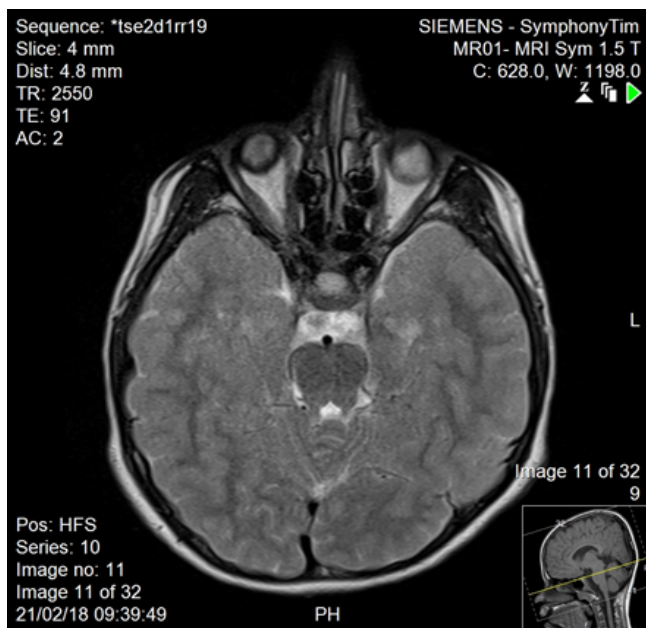
**Figure 3.** Sagittal T1-weighted MRI showing abnormal pituitary gland of decreased height

## Discussion

There have been many developments regarding the interpretation of hypopituitarism [1]. Hypopituitarism becomes evident when the network between the hypothalamus and the pituitary gland is blunted because of diminished vessels of the gland [1]. Diagnosis is confirmed by measuring anterior pituitary hormone levels in early morning blood samples after an overnight fast [2]. In our case, the patient's results showed growth hormone deficiency and central hypothyroidism. Hypopituitarism was diagnosed based on the deficiencies



**Figure 4.** Coronal T2-weighted MRI with right eye globe smaller than left, with heterogeneous signal intensity



**Figure 5.** Axial T2-weighted MRI with bilateral optic nerve hypoplasia

of two anterior pituitary hormones, in addition to decreased height of the pituitary gland confirmed with MRI of the brain. The loss of pituitary gland function can result from congenital or acquired causes [1]. Idiopathic etiology, lesions affecting the sella and central nervous system malformations are considered congenital causes of hypopituitarism [1]. Acquired causes include pituitary tumors, craniopharyngioma, traumatic brain injury and meningitis [2]. Generally, an isolated pituitary deficiency indicates that only one pituitary hormone level is diminished [1]. Multiple pituitary hormone deficiencies indicate decline in the levels of two or more hormones [1]. The condition in which the pituitary gland fails to produce all its

hormones is called panhypopituitarism, which accounts 92% of the overall incidence [1,3]. As hypopituitarism is linked to cardiovascular manifestations that increase the mortality rate in children, early initiation of treatment is vital [2,3]. Treatment is the administration of the deficient hormones [2,3]. In our case, thyroxine and growth hormone replacement were initiated on the basis of the findings. The other manifestation seen in our patient was congenital blindness. The development of optic vision and a binocular system is established by the age of one year [8]. Loss of vision in children is frequently due to a cortical visual defect, hypoplasia of the optic nerve, and retinopathy of prematurity [9]. Optic nerve hypoplasia was suspected to be the cause of blindness in our patient, as a manifestation of SOD. The disorder was initially thought to represent an association between optic nerve hypoplasia and absence of the septum pellucidum [10]. Further analysis resulted in pituitary dysfunction being considered a manifestation of SOD [10]. A clinical triad forms SOD and at least two features should be present for diagnosis [7,10]. The triad consists of a pituitary defect, optic nerve hypoplasia, and brain midline defects with the absence of the septum pellucidum [7,10]. There are three clinical classifications of SOD according to a study that explored the clinical spectrum of the disorder: classic SOD, SOD-like and SOD-plus [11-13]. The presence of the three manifestations defines the classic type [13]. SOD-like presentation includes endocrine insufficiency as well as optic nerve hypoplasia, but an intact septum pellucidum [13]. The clinical picture of SOD-plus includes all three manifestations of the typical disease, accompanied by abnormalities in cortical development [13]. Eye examination, pituitary hormone evaluation and MRI should be performed to establish the diagnosis [7]. The disorder has phenotypic variations and is usually diagnosed clinically [11]. Brain MRI usually reveals unilateral or bilateral optic nerve hypoplasia, optic chiasm hypoplasia, septum pellucidum absence, and an irregular pituitary gland [11]. MRI in our patient showed no midline brain anomalies, with intact septum pellucidum and corpus callosum. Bilateral optic nerve hypoplasia was confirmed with imaging. This result corresponded to two features (endocrine insufficiency and optic nerve hypoplasia) of the SOD triad; our case was consistent with the SOD-like classification. SOD-like and classic SOD patients are more likely to have significant vision loss [13]. Our patient had blindness, confirmed on ophthalmological examination. Optic nerve hypoplasia in children can be bilateral, found in 80% of all cases or unilateral [12]. Hypoplasia of the optic nerve was formerly reported as defective vision [12]. Children with unilateral optic nerve hypoplasia have greater risk for developmental delay; on the other hand, patients with bilateral optic nerve hypoplasia have decreased risk of developmental delay [12]. This explains the apparent normal development in our

patient. Parental consanguinity seems to play some role in developing SOD [11]; however, our patient had no history of parental consanguinity. Since SOD is sporadic, rate of recurrence is <1% if family history is negative [11]. Our patient had an older sister with congenital blindness suspected to result from SOD. Growth hormone is thought to be the most prominent concern with regard to the endocrine manifestations of the disease [11]. Our patient presented with short stature, confirming suppressed stimulation of growth hormone. Other manifestations of the disease are seizures, cerebral palsy, developmental delay, anosmia, cardiac and esophageal anomalies, and sleep disturbance [11], none of which were observed in our patient. The management of SOD patients requires a multidisciplinary approach to ensure normal growth and development [7]. It is essential to know the presentations of each classification and to confirm the diagnosis based on patient symptoms, to be able to provide appropriate care. Annual ophthalmological examination and correction of refractive errors should be performed [6]. Endocrinology referral and maintenance of normal hormone levels are important in children [6]. Other presentations of SOD, such as developmental delay, neurological abnormalities, and sleep disturbance should be addressed and managed adequately. Regarding our patient, the features of the disorder were illustrated and explained to his parents. Growth hormone and thyroxine were prescribed, and an ophthalmology referral was provided.

## **Conclusion**

Although SOD is a rare disorder, physicians should be aware of the manifestations in children for early detection and management. The presenting features of the disorder play an important role in development. Endocrine abnormalities, optic nerve hypoplasia and brain midline defects are the cornerstone features of SOD. Although our patient showed two manifestations of the disorder, further investigation and research enabled us to classify the type of SOD and begin management. The disorder has different presentations; however, it is essential to investigate children suspected of having SOD. The goal is to ensure a normal life for these patients, after the diagnosis is confirmed.

## **References**

1. Stieg MR, Renner U, Stalla GK, et al. Advances in understanding hypopituitarism. *F1000Research* 2017; 6.
2. Kim SY. Diagnosis and treatment of hypopituitarism. *Endocrinol Metab* 2015; 30: 443-455.
3. Gundgurthi A, Garg MK, Bhardwaj R, et al. Clinical spectrum of hypopituitarism in India: A single center experience. *Indian J Endocrinol Metab* 2012; 16: 803.
4. Nallasamy S, Anninger WV, Quinn GE, et al. Survey of childhood blindness and visual impairment in Botswana. *J Am Assoc Pediatr Ophthalmol Strabismus* 2010; 14: e23-24.
5. Gilbert C, Muhit M. Eye conditions and blindness in children: Priorities for research, programs and policy with a focus on childhood cataract. *Indian J Ophthalmol* 2012; 60: 451.
6. Garcia-Filion P, Borchert M. Optic nerve hypoplasia syndrome: a review of the epidemiology and clinical associations. *Curr Treat Options Neurol* 2013; 15: 78-89.
7. Zoric L, Nikolic S, Stojcic M, et al. Septo-optic dysplasia plus: A case report. *BMC Res Notes* 2014; 7: 191.
8. Gogate P, Gilbert C, Zin A. Severe visual impairment and blindness in infants: causes and opportunities for control. *Middle East Afr J Ophthalmol* 2011; 18: 109.
9. Kong L, Fry M, Al-Samarraie M, et al. An update on progress and the changing epidemiology of causes of childhood blindness worldwide. *J Am Assoc Pediatr Ophthalmol Strabismus*. 2012; 16: 501-507.
10. Jana M, Sharma S. Bilateral anophthalmia with septo-optic dysplasia. *Oman J Ophthalmol* 2010; 3: 86.
11. Webb EA, Dattani MT. Septo-optic dysplasia. *Eur J Hum Genet* 2010; 18: 393.
12. Borchert M. Reappraisal of the optic nerve hypoplasia syndrome. *J Neuroophthalmol* 2012; 32: 58-67.
13. Signorini SG, Decio A, Fedeli C, et al. Septo-optic dysplasia in childhood: The neurological, cognitive and neuro-ophthalmological perspective. *Dev Med Child Neurol* 2012; 54: 1018-1024.

## **Correspondence to:**

Abdulmoein Eid Al-Agha,  
Professor, Pediatric Endocrinology,  
Pediatric Department,  
King Abdulaziz University Hospital,  
P.O. Box 80215  
Jeddah 21589,  
Saudi Arabia.  
Tel: + 966 2 640 3841; + 966 2 6408353,  
Fax: + 966 2 640 3841; + 966 2 6408353,  
E-mail: aagha@kau.edu.sa