

## Clinical pharmacokinetics of parecoxib via intravenous and intramuscular injections in Chinese populations.

Chenghai Wang<sup>1,2</sup>, Shaoyan Huang<sup>3</sup>, Jianzhong Zhang<sup>2</sup>, Jie Li<sup>2</sup>, Wei Shao<sup>2</sup>, Kaoxiang Sun<sup>4</sup>, Mengyuan Zhang<sup>1\*</sup>

<sup>1</sup>Department of Anesthesiology, Shandong Provincial Hospital Affiliated to Shandong University and Yantaishan Hospital, Yantai, PR China

<sup>2</sup>Department of Anesthesiology, Yantaishan Hospital, Yantai, Shandong, PR China

<sup>3</sup>Department of Oncology, Yantaishan Hospital, Yantai, Shandong, PR China

<sup>4</sup>School of Pharmacy, Yantai University, Yantai, Shandong, PR China

### Abstract

**Objective:** To study the clinical pharmacokinetics of parecoxib sodium via intravenous and intramuscular injections in Chinese populations.

**Methods:** A total of 20 patients undergoing unilateral lower limb surgery were selected, and their related parameters were as follows: ASA: Grade I to II, age: 20 to 60 years, and weight: 50 to 80 kg. They were randomly assigned to two groups: the intravenous injection group (IV group) and the intramuscular injection group (IM group), with 10 patients in each group (N=10). Then, they were subjected to intravenous or intramuscular injection of parecoxib at 40 mg (diluted with 2 ml of normal saline) and venous blood sampling (2 ml) at 0, 10, 20, 30, 40, 50, and 60 min, and at 1.5, 2, 4, 6, 8, 12, 16, 20 and 24 h after the injection. After that, the venous blood was added with heparin for anti-coagulation and centrifuged at 3000 rpm for 10min. The plasma was separated and placed in a refrigerator at -20°C. The plasma concentration of levobupivacaine was detected by means of High Performance Liquid Chromatography (HPLC). All statistical analysis was performed using SPSS17.0 statistical software. Measurement data were expressed as mean  $\pm$  standard deviation ( $\bar{x} \pm s$ ), and the t test and repeated measurement analysis of variance were adopted for inter- and intra-group comparisons. The count data were compared using the  $\chi^2$  test, and  $P < 0.05$  was considered statistically significant.

**Results:** After the intravenous and intramuscular injections of parecoxib, its plasma concentration was increased quickly, with its  $C_{max}$  at  $31.578 \pm 13.407$  and  $21.311 \pm 10.160$  mg/L, respectively. Then its plasma concentration was decreased rapidly, with no parecoxib detected in the plasma of all patients at 4 h after its administration. Accordingly, the  $C_{max}$  of valdecoxib in patients from the two groups was reached at 20 min and 1.5 h, respectively, with the values at  $0.751 \pm 0.290$  and  $0.543 \pm 0.162$  mg/L, respectively, and no parecoxib was detected in the plasma of all patients at 24 h after its administration. Processing by the pharmacokinetic software showed that the AUC of parecoxib of patients in Group II was higher than that in Group I ( $P < 0.05$ ) and that CL was lower than that in Group I ( $P < 0.05$ ), whereas the differences in the pharmacokinetic parameters of valdecoxib in patients between the two groups were not statistically significant ( $P > 0.05$ ).

**Conclusion:** The routes of administration can affect the clinical pharmacokinetic parameters of parecoxib, but not those of valdecoxib.

**Keywords:** Parecoxib, High performance liquid chromatography,  $C_{max}$ , Cyclooxygenase-2 (COX-2) inhibitor.

Accepted on March 8, 2017

### Introduction

Parecoxib sodium is a specific Cyclooxygenase-2 (COX-2) inhibitor, and its inhibitory effect on COX-2 is 28,000-fold that on COX-1 [1,2]. It does not affect the function of the gastrointestinal tract, the platelets and the kidney, etc. while it

exerts the analgesic and anti-inflammatory effects, and thus, it has fewer clinical side effects and adverse reactions [3-6] and is especially suitable for the treatment of perioperative pain in patients. It demonstrates better application prospects.

Parecoxib is a prodrug, and it is converted into valdecoxib by hydrolysis of liver enzymes *in vivo*, with the latter continuing

to play anti-inflammatory and analgesic effects [1,2]. Currently, most of domestic clinical studies focus on pharmacodynamics of parecoxib [7-10] and there are few studies on its pharmacokinetics. Therefore, its data of pharmacokinetic parameters can only be obtained from foreign studies [11-13]. This study aimed to investigate the clinical pharmacokinetics of parecoxib via intravenous and intramuscular injections in Chinese populations, thereby providing a theoretical basis for clinical medication.

Parecoxib is a new molecular entity which represents the first parenteral "COX-2 selective" agent. For orally available compound valdecoxib, parecoxib sodium is a parenteral prodrug is considered in a current review. For safety and efficacy related with parecoxib sodium is due to dual development that has impacted, and confounded. This parecoxib sodium is supplied as a sterile, preservative-free, lyophilized powder which is equivalent to 20 mg or 40 mg parecoxib in single-use vials. It is designed to be made again with 1 ml (20 mg vials) or 2 ml (40 mg vials) sterile saline for injection (0.9% sodium chloride).

Side effects of parecoxib are ulcer and gastrointestinal bleeding, jaundice and abnormal liver function, heart failure, heart attack, slow heart rate, high/low blood pressure and abnormal heart rhythm, swelling, rash, itching and difficulty in breathing and back pain, low platelet counts, agitation, disturbed sleeping and decreased urination.

## Materials and Methods

This study was approved by the Medical Ethics Committee. A total of 20 patients undergoing selective surgery on unilateral femur, tibia and fibula, ankle or toe were enrolled, and their related parameters were as follows: ASA: Grade I to II, age: 20 to 60 years, and weight: 50 to 80 kg. They all signed the informed consent before the surgery. The patients were randomly divided into two groups (N=10): the intravenous injection group (Group I) and the intramuscular injection group (Group II). Exclusion criteria: 1) patients aged <20 years or >60 years; 2) pregnant women and women in lactation; 3) patients with a history of drug allergy to NSAIDs; 4) patients with obvious abnormal function of the heart, the lung, the liver and the kidney; 5) patients administered with such hepatic microsomal enzyme inducers as carbamazepine and rifampin, or such hepatic microsomal enzyme inhibitors as cimetidine and isoniazid; 6) patients with a history of drinking and drug addiction; 7) patients with a history of mental illness; 8) patients with intraspinal anesthesia contraindications, such as scoliosis and coagulation abnormalities; 9) patients whose surgery time exceeded 3 h; 10) patients whose intraoperative blood loss exceeded 500 ml; and 11) patients whose intraoperative infusion volume exceeded 1000 ml or who needed blood transfusions, etc.

Anesthesia and monitoring Patients lied on their left or right side and experienced L3.4 gap positioning. After disinfection and local anesthesia, they underwent the epidural puncture, and the compression test with brine turned negative. The spinal

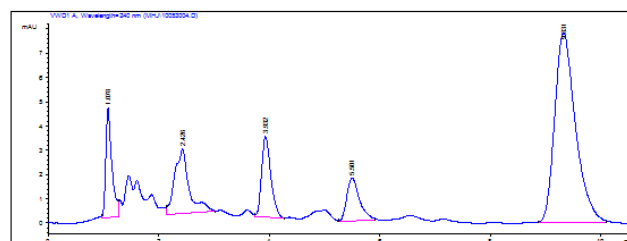
anesthesia needle was inserted, and 1.5-2.0 ml of 0.5% ropivacaine injection was slowly injected into the subarachnoid space. Then, they switched to the supine position, and the anesthesia level was measured by means of needle punching. Intraoperative care is intensified: ECG, Bp, SpO<sub>2</sub> and urine volume. Infusion was performed to supplement circulating blood volume. After the surgery, the patients were sent back to the ward for continued observation and treatment. Perioperative adverse reactions in patients were observed and recorded, and symptomatic treatment was given.

Administration of parecoxib and blood sampling Patients were intravenously or intramuscularly injected with 40 mg of parecoxib (diluted with 2 ml of normal saline) 30 min before the intraspinal anesthesia, and venous blood sampling (2 ml) was performed at 0, 10, 20, 30, 40, 50, and 60 min, and at 1.5, 2, 4, 6, 8, 12, 16, 20 and 24 h after the injection. After that, the venous blood was added with heparin for anti-coagulation and centrifuged at 3000 rpm for 10 min. The plasma was separated and placed in a refrigerator at -20°C.

HPLC was performed to detect the concentrations of parecoxib and valdecoxib in the plasma.

**Chromatographic column:** Diamonsil C18 column (5 μm, 150 mm × 4.6 mm i.d.); precolumn: DIKMA C18 column (10mm, 4.6 μm); column temperature: 30°C; mobile phase: acetonitrile-water-phosphoric acid (57: 43: 0.01, v/v); flow rate: 1.0 ml/min; detection wavelength: 240 nm; internal standard: celecoxib; injection volume: 10 μl.

**Standard curve:** Parecoxib and valdecoxib standard solutions at a series of concentrations were precisely measured and added to centrifuge tubes containing 500 μL blank plasma, respectively. 50 μL of celecoxib internal standard solutions (25 mg/L) were added for mixing. Drug-containing plasma with the concentration of parecoxib at 100, 50, 20, 10, 5, 2 and 1 mg/L and with the concentration of valdecoxib at 5, 2, 1, 0.5, 0.1 and 0.05 mg/L were prepared, respectively. The ratios of the peak areas of parecoxib and valdecoxib to the peak areas of the internal standard (Y) and their mass concentrations (X) were subjected to linear regression, respectively, to yield the linear equation of parecoxib:  $Y=0.0178X-0.0229$ , the correlation coefficient:  $R^2=0.9999$ , and linear range: 1~100 mg/L, and the linear equation of valdecoxib:  $Y=0.3152X-0.0051$ , the correlation coefficient:  $R^2=0.9998$ , and linear range: 0.05~5 mg/L.



**Figure 1.** High performance liquid chromatogram of parecoxib, valdecoxib and celecoxib.

**Specificity:** The blank plasma was free from interference of endogenous impurities at the peak of the samples, and the baseline was stable. The retention times of valdecoxib, parecoxib and celecoxib were approximately 3.9 min, 5.5 min and 9.4 min, respectively. All peaks were well separated (Figure 1).

**Precision and recovery:** The recoveries of valdecoxib and parecoxib solutions at 3 different concentrations were all

greater than 85%, and the inter- and intra-day variations were all smaller than 15%, meeting the requirements on extraction and measurement of biological samples and ensuring the accuracy and precision of the measurement results. This indicated that the precision of the method was in line with the requirements on the analysis of biological samples. Besides, it showed good repeatability and small errors, and thus it could meet the needs for pharmacokinetic studies (Tables 1 and 2).

Table 1. Precision and recovery of parecoxib.

Conc. (mg/L)	Inter-day		Intra-day		Recovery RSD/% (%)
	$\bar{x} \pm s$	RSD/%	$\bar{x} \pm s$	RSD/%	
0.05	0.048 ± 0.0044	9.17	0.048 ± 0.004	8.33	96.75 ± 0.0032 6.64
0.5	0.498 ± 0.0010	0.2	0.4681 ± 0.007	1.5	98.54 ± 0.0043 8.83
5	5.029 ± 0.0456	0.91	4.326 ± 0.320	7.4	99.30 ± 0.0037 7.45

Table 2. Precision and recovery of valdecoxib.

Conc. (mg/L)	Inter-day		Intra-day		Recovery RSD/% (%)
	$\bar{x} \pm s$	RSD/%	$\bar{x} \pm s$	RSD/%	
0.05	0.053 ± 0.0058	10.9	0.044 ± 0.002	9.5	103.80 ± 0.0015 2.917
0.5	0.478 ± 0.0065	1.36	0.381 ± 0.019	5.29	95.64 ± 0.0065 1.353
5	5.013 ± 0.056	0.71	4.216 ± 0.258	6.14	100.30 ± 0.0035 0.711

Processing of pharmacokinetic parameters: The plasma concentration-time data of patients from the two group were processed using the WonNonlin6.4 pharmacokinetic software, and the pharmacokinetic parameters for calculation included the elimination half-life ( $t_{1/2\beta}$ ), Area Under the Curve (AUC), apparent volume of distribution ( $V_d$ ) and Clearance rate (CL). The actually measured values of peak plasma concentration ( $C_{max}$ ) and time to peak ( $T_{max}$ ) were used.

**Statistical processing**

All statistical analysis was performed using SPSS17.0 statistical software. Measurement data were expressed as mean ± standard deviation ( $\bar{x} \pm s$ ), and the t test and repeated

measurement analysis of variance were adopted for inter- and intra-group comparisons. The count data were compared using the  $\chi^2$  test, and P<0.05 was considered statistically significant.

**Results**

All patients completed the entire study successfully. Patients in the two groups were not significantly different in terms of such indicators as gender, age, weight, preoperative liver function and kidney function, operation time, infusion volume and blood loss (P>0.05) (Table 3). Perioperative SBP, DBP, HR and SPO<sub>2</sub> in patients from the two groups were stable, with no violent fluctuations, and the difference between the two groups was not statistically significant (P>0.05).

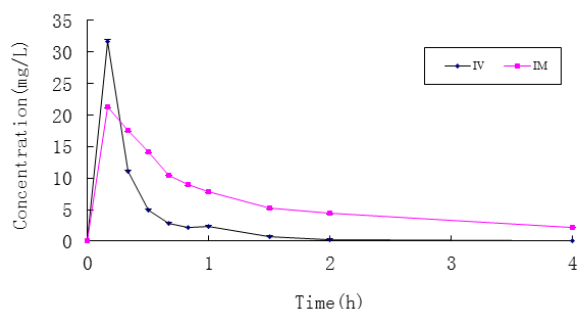
Table 3. General data of patients in the two groups ( $\bar{x} \pm s$ , n=10).

Gro up	Gender (Male/Female)	Age (Years)	Weight (kg)	HGB (g/L)	Total protein albumin	ALT (IU/L)	AST (IU/L)	BUN (mmol/L)	Cr (umol/L)	UA (umol/L)	Operatio n time (min)	Infusion volume (ml)	Blood loss (ml)
1	5/5	41.20 ± 9.10	65.00 ± 4.16	124.80 ± 7.19	76.00 ± 5.98	13.67 ± 5.10	25.96 ± 6.79	4.57 ± 1.36	58.67 ± 15.64	224.51 ± 49.80	92.50 ± 17.83	148.00 ± 38.53	705.00 ± 76.19
2	6/4	38.50 ± 7.44	63.60 ± 4.77	126.60 ± 8.97	74.90 ± 3.78	19.21 ± 5.51	27.99 ± 4.76	3.56 ± 1.61	56.87 ± 16.07	255.16 ± 62.64	85.50 ± 17.39	140.00 ± 51.63	675.00 ± 67.70

After patients in Group I were intravenously injected with parecoxib, its mean plasma concentration reached  $C_{max}$  in 10 min, which stood at 31.578 ± 13.407 mg/L, and then it was

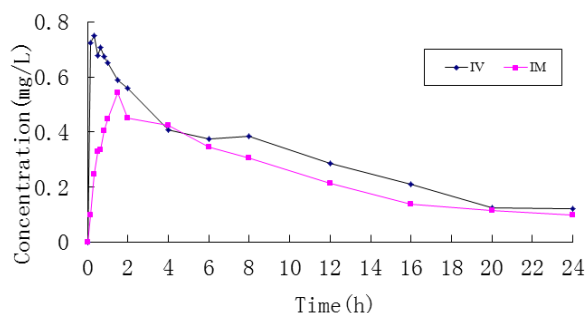
decreased rapidly. At 2 h after administration, parecoxib was detected in the plasma of only 2 patients, and no parecoxib was detected in the plasma of all patients at 4 h. Accordingly, the

plasma concentration of valdecoxib reached  $C_{max}$  in 20 min, which stood at  $0.751 \pm 0.290$  mg/L, and then it was decreased rapidly. At 24 h, valdecoxib at the concentration of  $0.133 \pm 0.0551$  mg/L could still be detected in plasma (Figure 2).



**Figure 2.** Average plasma concentration-time curve of parecoxib in patients from the two groups.

In contrast, the mean plasma concentration of parecoxib in patients from Group II after the intramuscular injection reached  $C_{max}$  in 10 min, which stood at  $21.311 \pm 10.160$  mg/L, and then it was decreased slowly. At 4 h, parecoxib could be detected in the plasma of all patients, and its concentration was  $2.226 \pm 0.997$  mg/L, while no parecoxib was not detected in the plasma of all patients at 6 h. Accordingly, the mean plasma concentration of valdecoxib was slowly increased and peaked at 1.5 h, standing at  $0.543 \pm 0.162$  mg/L. After that it was slowly decreased. And valdecoxib at the concentration of  $0.098 \pm 0.039$  mg/L could still be detected in the plasma (Figure 3).



**Figure 3.** Average plasma concentration-time curve of valdecoxib in patients from the two groups.

Inter-group comparisons showed that the  $C_{max}$  of parecoxib in patients from Group II after the intramuscular injection,  $21.597 \pm 9.861$  mg/L, and that after the intravenous injection,  $31.578 \pm 13.407$  mg/L, was not statistically significant ( $P > 0.05$ ), while the  $T_{max}$ , which stood at  $0.233 \pm 0.086$  h was significantly longer than that in patients from Group I, which was  $0.167 \pm 0.000$  h ( $P < 0.05$ ). After patients in Group II were injected intramuscularly with parecoxib, the peak concentration of valdecoxib was  $0.583 \pm 0.144$  mg/L, which was significantly lower than  $0.939 \pm 0.233$  mg/L,  $C_{max}$  of valdecoxib of patients in Group I ( $P < 0.05$ ), while the  $T_{max}$  ( $1.767 \pm 0.864$  h) was significantly longer than that of patients in Group I ( $0.452 \pm 0.272$  h) ( $P < 0.05$ ) (Table 4).

The WonNonlin6.4 pharmacokinetic software was used to calculate the main pharmacokinetic parameters of parecoxib and valdecoxib in patients from the two groups. After patients from Group II were intramuscularly injected with parecoxib, its AUC, the main pharmacokinetic parameters, was  $27.409 \pm 5.890$  h.mg.L<sup>-1</sup>, which was significantly higher than that of patients from Group I, which stood at  $19.015 \pm 7.985$  h.mg.L<sup>-1</sup> ( $P < 0.05$ ). However, there were no statistically significant differences between the two groups in terms of such parameters as  $t_{1/2\beta}$ ,  $V_d$  and CL ( $P > 0.05$ ). In contrast, the differences in the above pharmacokinetic parameters of valdecoxib between patients from the two groups were not statistically significant ( $P > 0.05$ ) (Table 4).

### Adverse reactions

The adverse reactions that occurred during the entire study are shown in Table 5, and they were mild and could be tolerated by the patients. They were not subjected to special treatment, and did not result in serious consequences to the patients.

### Discussion

HPLC is a common method for studying and detecting the plasma concentration of drugs in pharmacokinetics [10]. In this study, Diamonsil C18 column (5  $\mu$ m, 150 mm  $\times$  4.6 mm i.d.) was adopted, with acetonitrile-phosphoric acid aqueous solution (57:43, V/V) as mobile phase and celecoxib as internal standard. Quantification was achieved by means of peak areas, and valdecoxib within 0.05~5 mg/L ( $R^2=0.9998$ ) and parecoxib within 1~100 mg/L ( $R^2=0.9999$ ) were in a good linear relationship to ensure the detectability of various blood sampling time point specimens. The intra- and inter-day differences between parecoxib and valdecoxib at low, medium and high concentrations were less than 15%, suggesting that the precision of such a method was in line with the requirements on the analysis of biological samples. The recovery rates of three concentrations were all greater than 85%, indicating that such a method showed good accuracy. In the chromatogram, the retention time of valdecoxib was about 3.9 min, that of parecoxib was 5.5 min, and that of the internal standard celecoxib was about 9.4 min. All peaks were well separated, and there were no interference from other drugs and endogenous impurities to the test substances, indicating that the specificity of such a method conformed to the requirements on the detection of the biological samples and the measured data were accurate and reliable.

Pharmacokinetics of drugs reflects the absorption, distribution, metabolism and excretion of drugs *in vivo*, and it is associated with such factors as patients' age, routes of administration, liver and kidney functions. Intraoperative factors, such as operation time, adjuvants, the amount of blood loss and infusion volume, will also affect drug metabolism. Therefore, it is necessary to study the clinical pharmacokinetics, thus guiding the rational and safe clinical medication and improving the effectiveness of clinical medication.

Mutations of one or more alleles occur in the long evolutionary process of mankind, which alter the genes of drug metabolizing enzymes and corresponding enzyme proteins are generated to enable mankind to adapt to environmental changes. Such a mutation of genes can be passed onto the next generations through inheritance, and therefore, the genetic polymorphism of human drug metabolizing enzymes is gradually formed. The cytochrome oxidases P450 (CYP) that participate in the metabolism of parecoxib *in vivo* are mainly CYP3A4 and CYP2C9. Basic and clinical studies have shown that CYP3A4 and CYP2C9 demonstrate racial differences [14-16]. Therefore, clinical medication cannot simply rely on foreign parameter data and it is necessary to study the clinical pharmacokinetics of Chinese population, thereby guiding clinical medication, avoiding adverse drug reactions as far as possible, and enhancing the safety of clinical medication.

There are few studies on the clinical pharmacokinetics of parecoxib in China, and therefore, clinical medication can only rely on foreign data [11-13]. To minimize the impact of intraoperative medication, blood loss and infusion volume, etc. on the plasma concentrations of parecoxib and valdecoxib, the subjects in this study were patients undergoing unilateral lower limb surgery and the operation time was controlled within 3 h, to ensure the accuracy of blood samples as far as possible.

Laine et al. [11] reported on the clinical pharmacokinetics of parecoxib injected intramuscularly in adult patients at different doses, and the results showed that after the intramuscular injection of parecoxib (40 mg), its  $C_{max}$ ,  $T_{max}$  and  $t_{1/2\beta}$  were 1.681 mg/L, 0.25 h and 0.87 h, respectively, and that those of valdecoxib were 0.498 mg/L, 2.59 h and 7.35 h, respectively accordingly. After the intramuscular injection of parecoxib (40 mg) in this study, its  $C_{max}$ ,  $T_{max}$  and  $t_{1/2\beta}$  were 21.597 mg/L, 0.233 h and 0.810 h, respectively, and those of valdecoxib were 0.583 mg/L, 1.767 h and 10.454 h, respectively. There were differences between domestic and foreign data, and here was the analysis of its reasons: 1) The main reason might be the genetic polymorphism of drug metabolizing enzymes, indicating that the clinical medication of Chinese people cannot rely solely on foreign data; 2) Laine et al. [11] performed blood sampling at 1, 2, 5, 15 min until 96 h after the intramuscular injection of parecoxib, but the sampling was done at 10, 20, 30 min until 24 h after the intramuscular administration in this study. The setting of time points for sampling had a huge impact on the pharmacokinetic parameters, especially on  $C_{max}$  and  $T_{max}$ , suggesting that the clinical pharmacokinetics of parecoxib in Chinese people demand further studies; 3) in this study, patients with unilateral lower limb surgery were enrolled. They had a short operation time, less blood loss, and the corresponding infusion volume was not large, so that the impact of bleeding, infusion and

hemodilution on the plasma concentration could be avoided as far as possible.

In this study, the plasma concentration of parecoxib was quickly increased after its intravenous and intramuscular injections, with the peak concentration reached both at 10 min, the first blood sampling time point. If blood sampling time points were set within 10 min in this study, its  $C_{max}$  might be higher, and  $T_{max}$  would be shorter. The comparison of pharmacokinetic parameters showed that the  $T_{max}$  was longer while CL was lower in Group II, as compared with Group I ( $P < 0.05$ ), but it was of little clinical significance. Although the difference in  $C_{max}$  of parecoxib of patients between the two groups was not statistically significant ( $P > 0.05$ ), the difference of nearly 10 mg/L between the two was of clinical significance, suggesting that the route of administration can affect the plasma concentrations and pharmacokinetic parameters of parecoxib.

After the intravenous and intramuscular injections of parecoxib, the plasma concentration of valdecoxib was also rapidly increased, with its  $C_{max}$  reached at 20 min and 1.5 h, respectively. The comparison of pharmacokinetic parameters showed that the  $C_{max}$  in Group II was lower than that in Group I ( $P < 0.05$ ), while it was of little clinical significance. Besides, the differences in other pharmacokinetic parameters between the two groups were not statistically significant ( $P > 0.05$ ), indicating that route of administration of parecoxib had little effect on the plasma concentrations and pharmacokinetic parameters of valdecoxib.

During the entire study, injection site pain occurred in two patients, nausea and drowsiness occurred in 1 patient, respectively. Such events were not subjected to special treatment and the patients could tolerate them. The plasma concentrations showed that the  $C_{max}$  of parecoxib and valdecoxib in all patients were 51.82 mg/L and 1.21 mg/L, respectively, indicating that parecoxib demonstrate good safety profiles, and thus it is suitable for clinical applications.

To sum up, the clinical pharmacokinetics of parecoxib via intravenous and intramuscular injections in Chinese populations were investigated in this study, providing a theoretical basis for its clinical medication. The route of administration of parecoxib can affect its plasma concentrations and pharmacokinetic parameters, whereas the impact on the plasma concentration and pharmacokinetic parameters of its metabolite valdecoxib is of no clinical significance. Furthermore, there are still shortcomings in terms of setting of sampling time points, and we will carry out further studies to provide more accurate parameters on the clinical pharmacokinetics of parecoxib in Chinese populations, thereby guiding the rational and safe clinical medication.

**Table 4.** The main pharmacokinetic parameters of parecoxib and valdecoxib in patients from the two groups ( $\bar{x} \pm s, n=10$ ).

		$C_{max}$ (mg/L)	$T_{max}$ (h)	$t_{1/2\beta}$ (h)	AUC (h.mg.L <sup>-1</sup> )	$V_d$ (L)	CL (L/h)
Group I	Parecoxib	31.578 ± 13.407	0.167 ± 0.000	0.556 ± 0.456	19.015 ± 7.985	1.406 ± 0.669	2.349 ± 1.058

	Valdecoxib	0.939 ± 0.233	0.452 ± 0.272	8.009 ± 2.707	9.107 ± 2.337	51.952 ± 16.329	4.660 ± 1.195
Group II	Parecoxib	21.597 ± 9.861	0.233 ± 0.086*	0.810 ± 0.506	27.409 ± 5.890*	1.727 ± 1.118	1.520 ± 0.320*
	Valdecoxib	0.583 ± 0.144*	1.767 ± 0.864*	10.454 ± 7.073	7.360 ± 1.490	78.380 ± 38.999	5.617 ± 1.021

\*Compared to Group I, P<0.05.

**Table 5.** Perioperative adverse reactions in patients from the two groups (n).

	Group I	Group II	Total
Injection site pain	1	1	2
Nausea	1	0	1
Drowsiness	1	0	1

## References

- Habibi AH, Puig D, Solanas A. A probabilistic approach for breast boundary extraction in mammograms. *Comp Math Methods Med* 2013.
- Shi G, Liu W, Zhang L, Li F. An efficient folded architecture for lifting-based discrete wavelet transform. *IEEE Trans Circ Sys II Express Briefs* 2009; 56: 290-294.
- Wu BF, Lin CF. A high-performance and memory-efficient pipeline architecture for the 5/3 and 9/7 discrete wavelet transform of JPEG2000 codec. *IEEE Trans Circ Sys Video Technol* 2005; 15: 1615-1628.
- Zhang W, Jiang Z, Gao Z, Liu Y. An efficient VLSI architecture for lifting-based discrete wavelet transform. *IEEE Trans Circ Sys II Express Briefs* 2012; 59: 158-162.
- Mohanty BK, Meher PK. Memory efficient modular VLSI architecture for highthroughput and low-latency implementation of multilevel lifting 2-D DWT. *IEEE Trans Sign Proc* 2011; 59: 2072-2084.
- Huang CT, Tseng PC, Chen LG. Generic RAM-based architectures for two-dimensional discrete wavelet transform with line-based method. *IEEE Trans Circ Sys Video Technol* 2005; 15: 910-920.
- Tian X, Wu L, Tan YH, Tian JW. Efficient multi-input/multi-output VLSI architecture for two-dimensional lifting-based discrete wavelet transform. *IEEE Trans Comp* 2011; 8: 1207-1211.
- Ching CJ, Yusong H. A memory efficient scalable architecture for 2D discrete wavelet transform. *IEEE Trans Image Process* 2013; 16: 607-614.
- Ezhilarasi P, Nirmalkumar P. Algorithmic based VLSI architecture of integrated image compression for CMOS image sensor. *Nat Acad Sci Lett* 2015; 38: 49-59.
- Karobari FM, Bharathi SH. VLSI architectures for 3D discrete wavelet transform and applications of wavelet transform-a comprehensive study 2015.
- Laine A, Fan J, Yang W. Wavelets for contrast enhancement of digital mammography. *IEEE Eng Med Biol Magaz* 1995; 14: 536-550.
- Martinez-Peiro M, Boemo EI, Wanhammar L. Design of high-speed multiplierless filters using a nonrecursive signed common subexpression algorithm. *IEEE Trans Circ Sys II Analog Dig Sign Proc* 2002; 49: 196-203.
- Ni SH, Huang YH, Lo KF, Lin DC. Buried pipe detection by ground penetrating radar using the discrete wavelet transform. *Comp Geotech* 2010; 37: 440-448.
- Daubechies I, Sweldens W. Factoring wavelet transforms into lifting steps. *J Fourier Anal Appl* 1998; 4: 247-269.
- Parhi KK. VLSI digital signal processing systems: design and implementation. John Wiley Sons 2007.
- Mohanty BK, Mahajan A, Meher PK. Area-and power-efficient architecture for high-throughput implementation of lifting 2-D DWT. *IEEE Trans Circ Sys II Exp Briefs* 2012; 59: 434-438.

## \*Correspondence to

Mengyuan Zhang

Department of Anesthesiology

Shandong Provincial Hospital Affiliated to Shandong University and Yantai-shan Hospital

PR China